

Industry's only AI-Native Networking Platform

THE TIME IS

NOW



**Subscriber
Networks
Analytics
Automation
Protection**



UbuntuNet Alliance


Lunama J. Miankodila

Sr. Sales Engineer – META – SSA-NA

JUNIPER
NETWORKS

Legal Disclaimer

JUNIPER NETWORKS MAY DISCLOSE INFORMATION RELATED TO DEVELOPMENT AND PLANS FOR FUTURE PRODUCTS, FEATURES OR ENHANCEMENTS, KNOWN AS A PLAN OF RECORD (“POR”). THESE DETAILS PROVIDED ARE BASED ON JUNIPER’S CURRENT DEVELOPMENT EFFORTS AND PLANS. THESE DEVELOPMENT EFFORTS AND PLANS ARE SUBJECT TO CHANGE AT JUNIPER’S SOLE DISCRETION, WITHOUT NOTICE. EXCEPT AS MAY BE SET FORTH IN DEFINITIVE AGREEMENTS, JUNIPER NETWORKS PROVIDES NO ASSURANCES AND ASSUMES NO RESPONSIBILITY TO INTRODUCE PRODUCTS, FEATURES OR ENHANCEMENTS DESCRIBED IN THIS PRESENTATION. PURCHASING DECISIONS BY THIRD-PARTIES SHOULD NOT BE BASED ON THIS POR AND NO PURCHASES ARE CONTINGENT UPON JUNIPER NETWORKS DELIVERING ANY FEATURE OR FUNCTIONALITY DEPICTED IN THIS PRESENTATION.



**10-second downtime during the Olympics,
1 million viewers miss the 100m dash.**


BT



**1-hour outage in distribution centers,
\$35 million in lost revenue.**

AMAZON

network experiences are fundamentally broken.



**The school district's network is inaccessible,
13,400 students can't take the test.**

COPPELL INDEPENDENT SCHOOL DISTRICT



**30 seconds of lost visibility,
a patient wanders out the door.**

VETERANS ADMINISTRATION

“ I’m on the Wi-Fi, but my business app is as slow as a snail. ”

“ My phone has full bars, but my Teams call keeps going in and out. ”

But connectivity is not the same as experiencing a great connection

“ My internet is down but there are no outages reported. ”

“ I’m connected, but my video is pixelated. ”

We need a different approach

MIST AI-NATIVE NETWORKING PLATFORM

Delivering the best user and operator experiences



ONE CLOUD – The Right Secure Infrastructure

Artificial Intelligence



Microservices cloud

- Marvis AI Assistant**
- Conversational assistant (with GenAI)
 - Minis Digital Experience Twin
 - Proactive insights & actions
 - Self-driving network operations



Security



Wireless



Wired



SD-WAN



NAC



Enterprise Routing



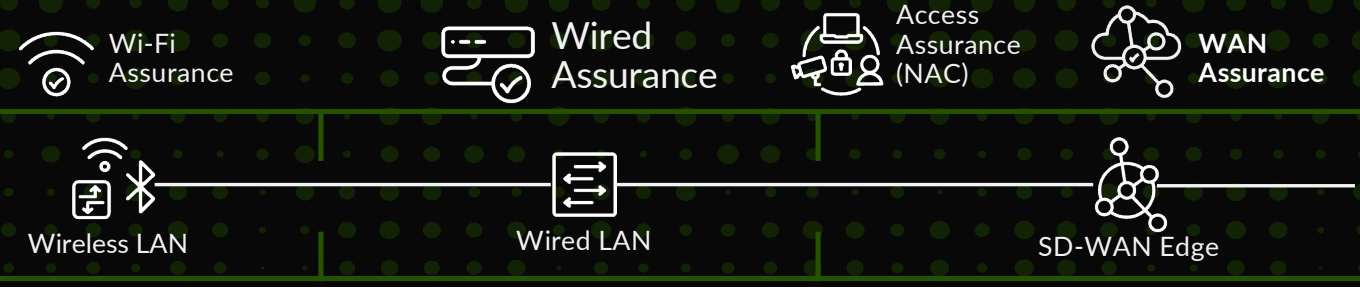
Data Center



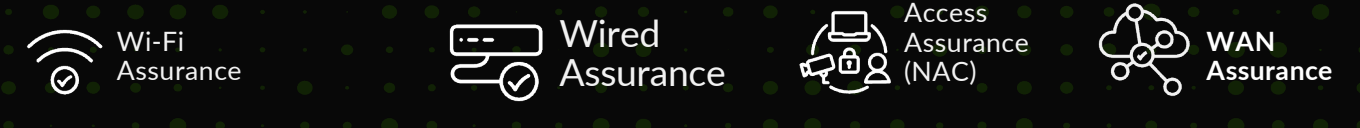
From Client-to-Cloud, Expect the Best User Experience



Why is my zoom call breaking up?



Why is my Application slow as snail?



3 of the 4 largest companies in the world have moved to Juniper

A LEADER 2025

Enterprise Wired & Wireless LAN Infrastructure

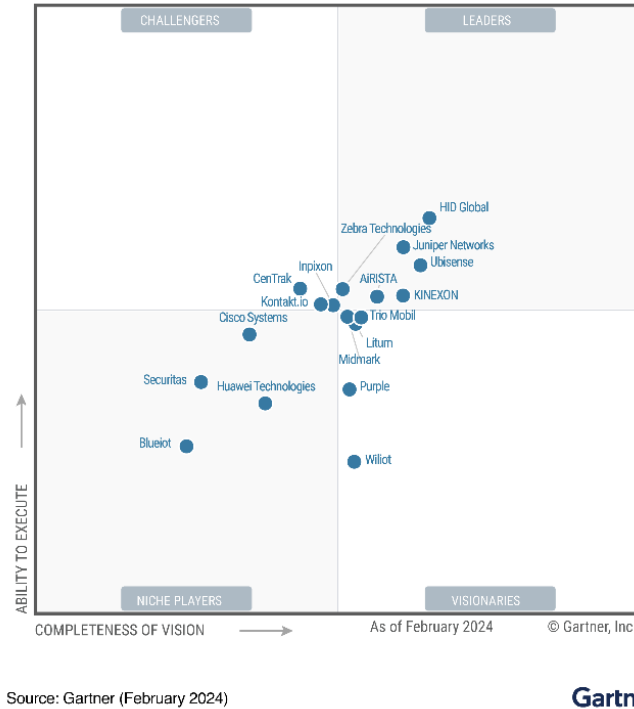
Figure 1: Magic Quadrant for Enterprise Wired and Wireless LAN Infrastructure



A LEADER 2024

Indoor Location Services

Figure 1: Magic Quadrant for Indoor Location Services



Source: Gartner (February 2024)

Gartner

A LEADER 2025

Data Center Switching and Critical Capabilities

Figure 1: Magic Quadrant for Data Center Switching



Gartner

Furthest in Vision, Highest in Execution

The Only Networking Vendor

Highest for Enterprise DC Network Buildout



Gartner
Magic Quadrant

© 2025 Juniper Networks | Juniper Confidential



THE TIME IS
NOW
JUNIPER
NETWORKS

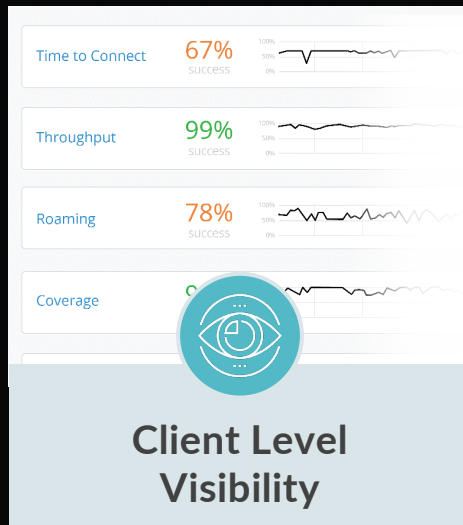
A photograph of a server rack with various colored lights (red, green, blue) and a green circular graphic overlay consisting of several concentric arcs.

Juniper Differentiators

Building Tomorrow's
Success Today

Juniper Networks AI-Native Enterprise Solutions

Substantially Better
Key Differentiation



UNDERPINNED BY A 100% OPEN API DRIVEN ARCHITECTURE

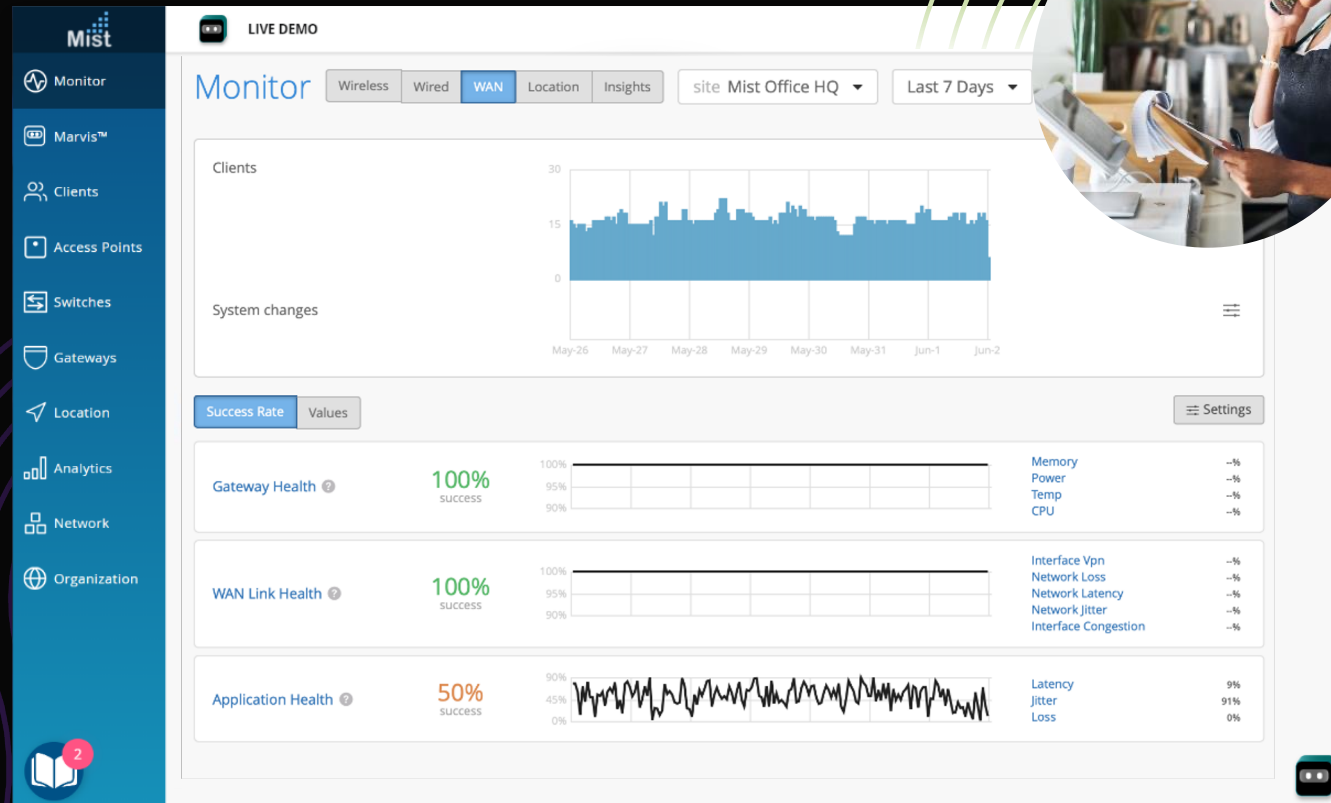
Delivered Across the Full Stack

Assured Experiences for Wi-Fi, Wired, and WAN

Automated operations make enterprise networks more predictable, reliable, and impactful

Enterprise network managed out of Juniper **AI-Native** Cloud

- ✓ Proactive optimization of in-store wireless performance
- ✓ Dynamic packet capture for rapid IT troubleshooting
- ✓ Automatic root-cause identification
- ✓ Network automation via APIs



Statistics

Timeline

Distribution

Correlation

Summary

Summary

1. Successful Connects

The client failed to connect on 96% of attempts primarily due to **DHCP problems**.

This problem is **Client-specific**, with most Client failures occurring on the "LD_MHMD" and "Mist_IoT".

2. Roaming

The client had a bad roaming experience 38% of the time primarily due to **poor signal quality**.

This problem is **affecting a small number of clients**, correlating most strongly with the "Mist_IoT" WLAN.

3. Throughput

The client experienced low throughput 27% of the time primarily due to **limited RF capacity**.

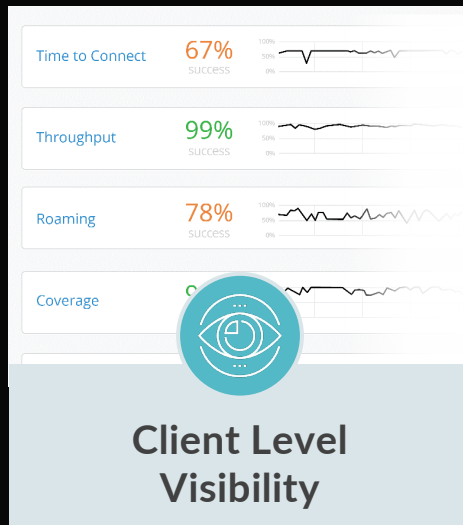
This problem is **Client-specific**, with most Client failures occurring on the 5 GHz and "Mist_IoT".

et Services	0%
rization	2%
ation	85%
	13%

ation	< 1%
rization	78%
	22%
	0%
	0%

Juniper Networks AI-Native Enterprise Solutions

Substantially Better
Key Differentiation

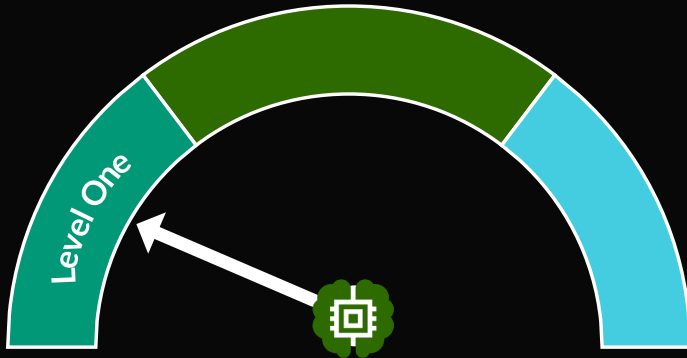


UNDERPINNED BY A 100% OPEN API DRIVEN ARCHITECTURE

Delivered Across the Full Stack

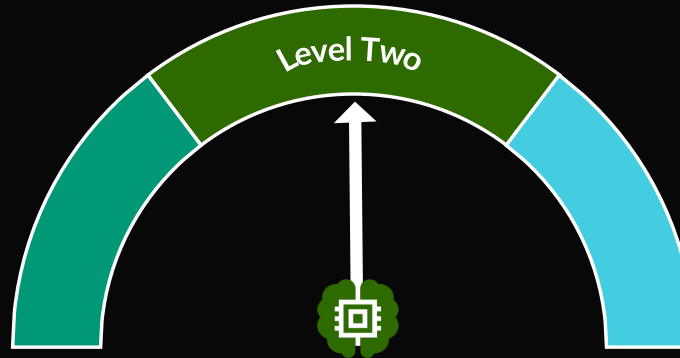
Marvis Actions: Delivering on the Self-Driving Network

Substantial Human Intervention



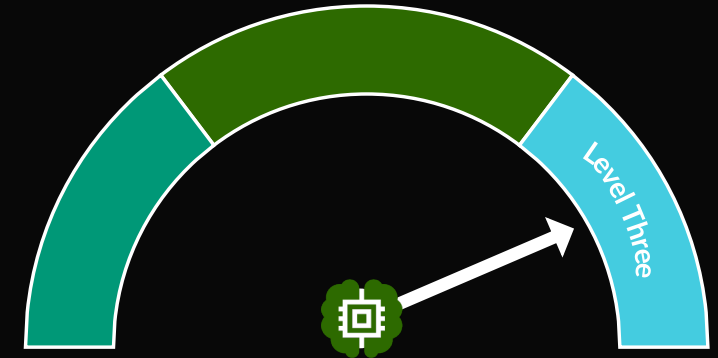
- ✓ Streaming pCAP

Minimal Human Intervention



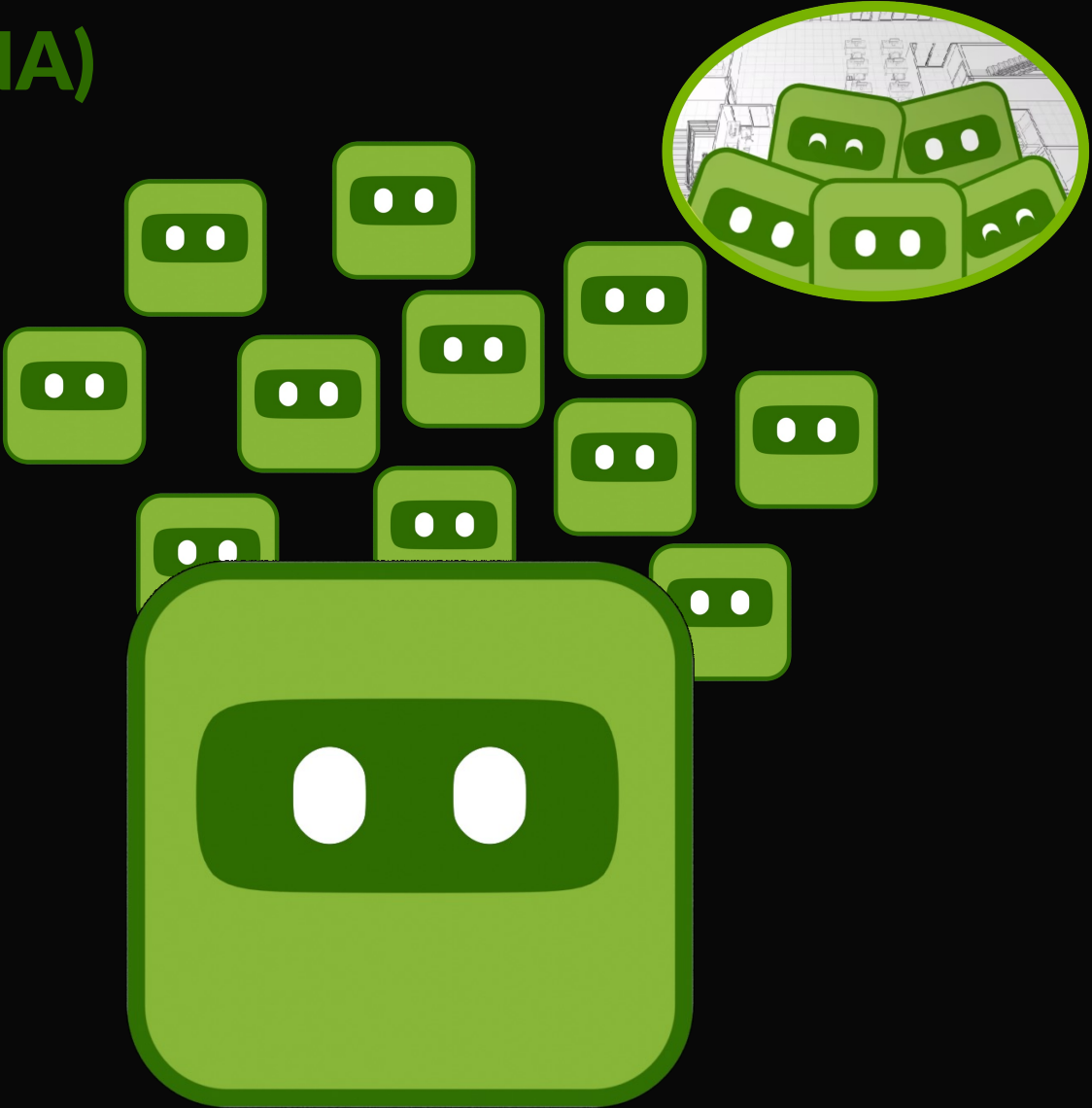
- ✓ Coverage Hole Detection
- ✓ Insufficient Capacity Detection
- ✓ Roaming Service Level
- ✓ Proactive RMA
- ✓ Anomaly Detection - Bad Cable
- ✓ Anomaly Detection - Bad Clients
- ✓ Anomaly Detection - DHCP
- ✓ Anomaly Detection - DNS
- ✓ Anomaly Detection - RADIUS
- ✓ Anomaly Detection - ARP
- ✓ Anomaly Detection - Others
- ✓ Bad WAN Link (Cable/LTE/ISP Issues)
- ✓ Dynamic pCAP

No Human Intervention



- ✓ Self Healing on Services - Mist Edge, Mist APs (pervasive remediation)
- ✓ AI Driven RRM (real-time optimization)
- ✓ Auto cancellation of 2.4 GHz & Auto Dual 5 GHz networks (real-time optimization)
- ✓ Anomaly Detection - Missing VLAN
- ✓ Anomaly Detection - Port Flapping

Marvis AI Assistant (fka. VNA)



Marvis Actions

Best Automation, insight and end-to-end assurance.



Marvis
Actions

Conversational
AI Interface

Proactive recommended actions to identify/fix problems before users know they exist.

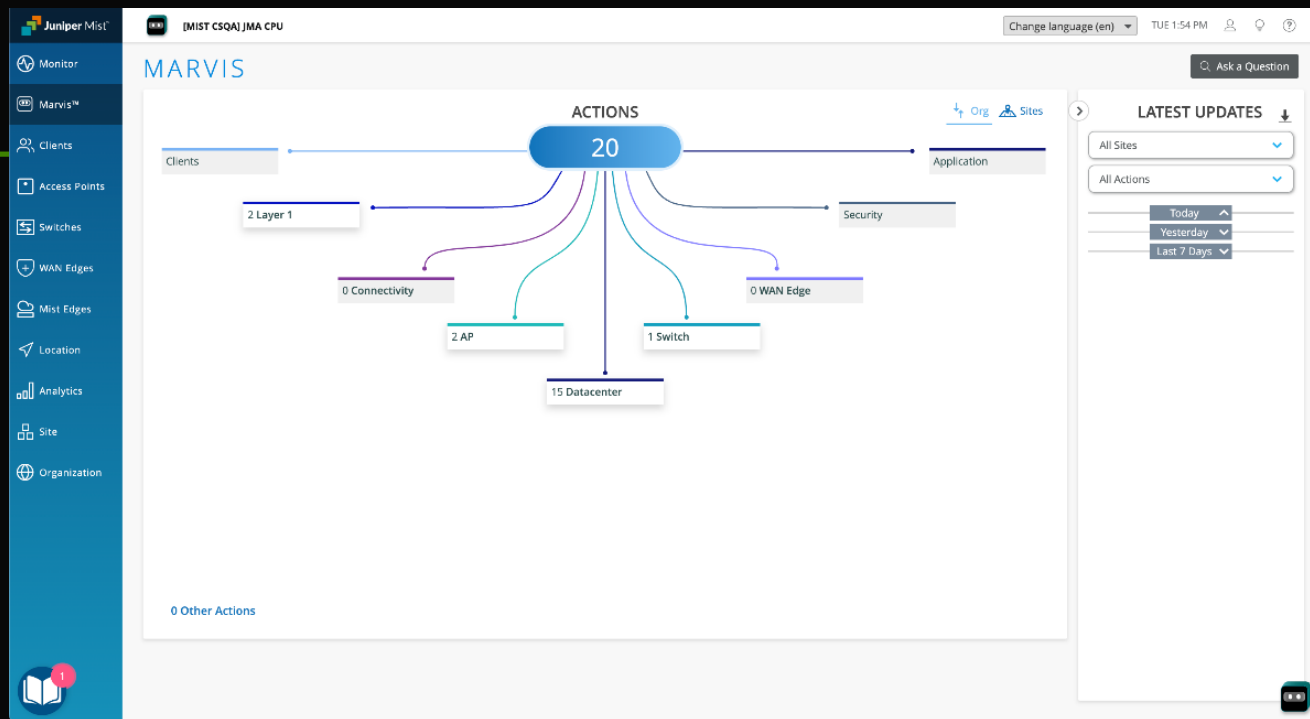
Wired: Bad cables, mismatched ports, L2 loops, DHCP failures, authentication failures, port flaps, ...

Wireless: Firmware issues, offline APs, persistently failing clients, coverage holes, insufficient capacity, bad cables, missing VLANs, ...

WAN: MTU Mismatching , VPN path is down , Missing VLAN and bad WAN uplink

Self-driving network operations.

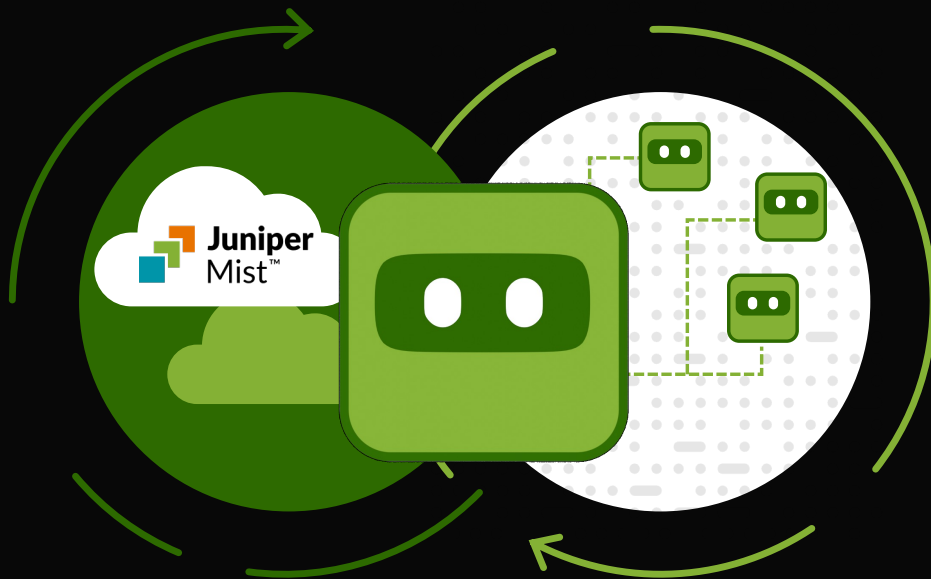
100% API driven for integration with existing OSS/BSS systems.



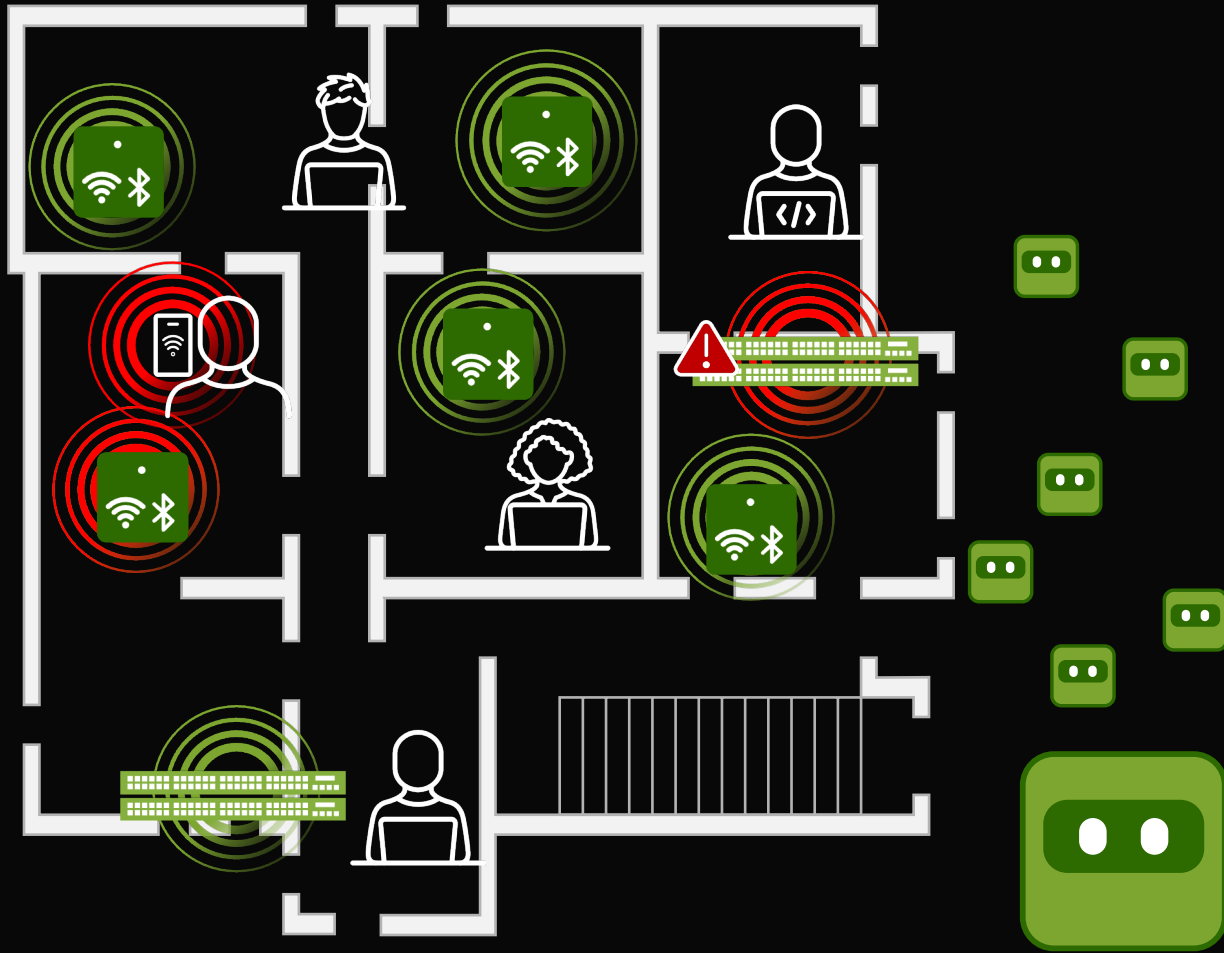
Marvis Minis: Only AI-Native Digital Experience Twin

How is it unique?

Fully integrated with Mist AI engine: provides a new data feed into Marvis, enriching all existing AI models.



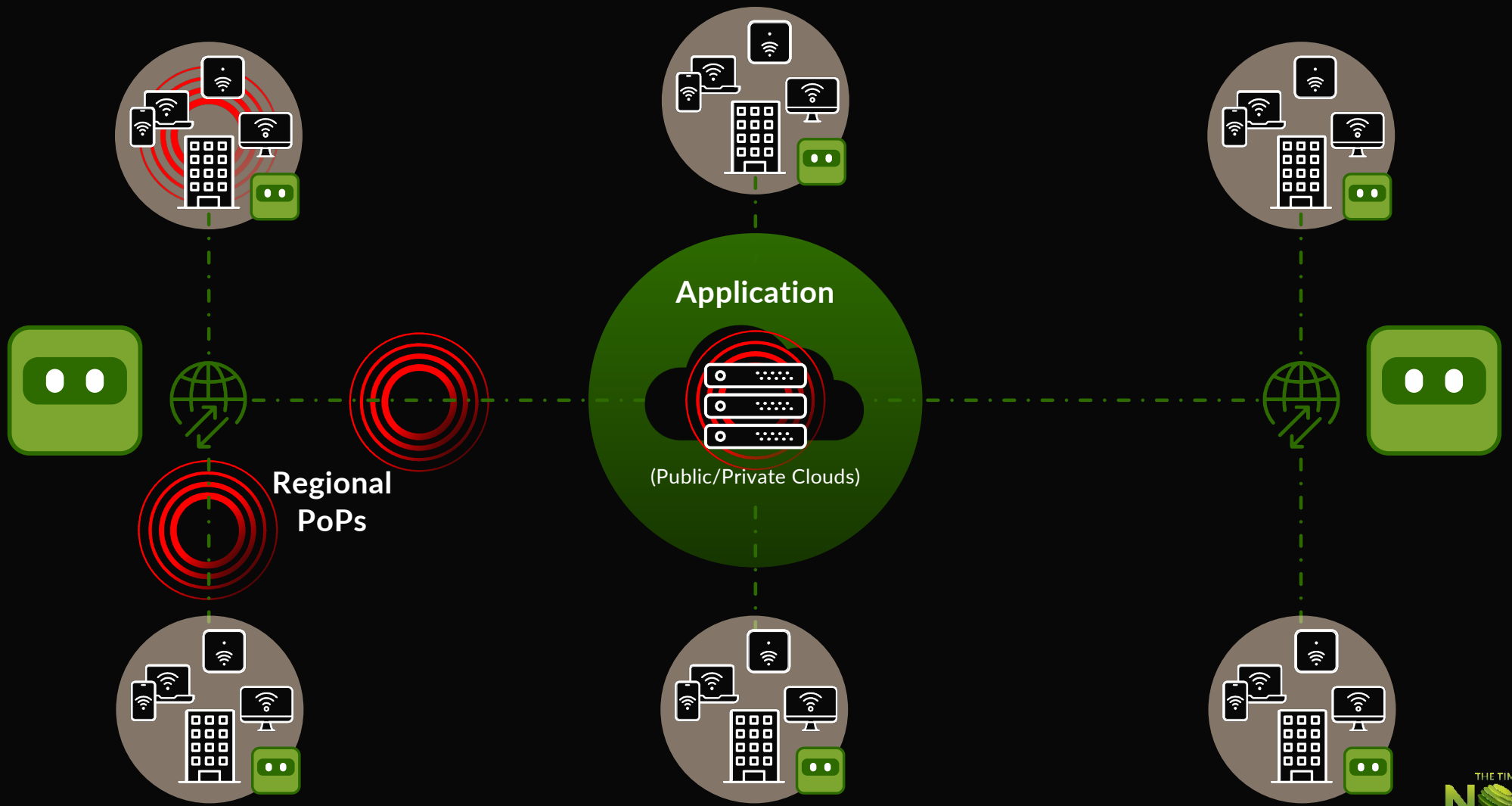
- ✓ Constant contextual learning: no need for manual configuration/adjustment.
- ✓ Always on and can be initiated on-demand.
- ✓ No additional hardware or software (part of Marvis VNA on existing network).
- ✓ Validation with Dynamic PCAP
- ✓ Adds/moves/changes validated in seconds vs. days.
- ✓ Identify scope of Failure



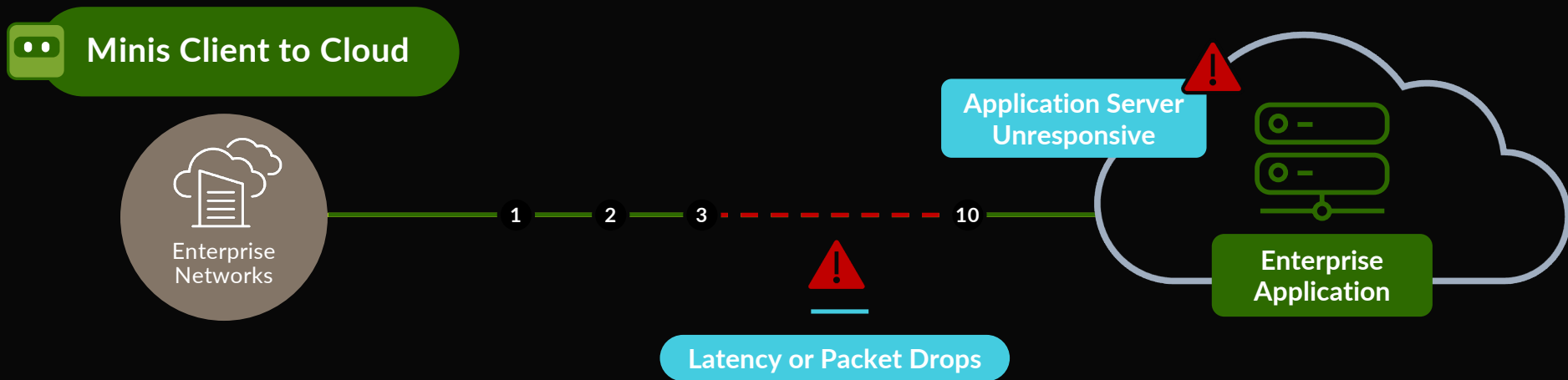
Critical Network Services



Critical Business Applications



Minis Client to Cloud Application Experience



Marvis AI Assistant (VNA)

Best Automation, insight and end-to-end assurance.



JUNIPER
driven by mist AI

Marvis
Actions

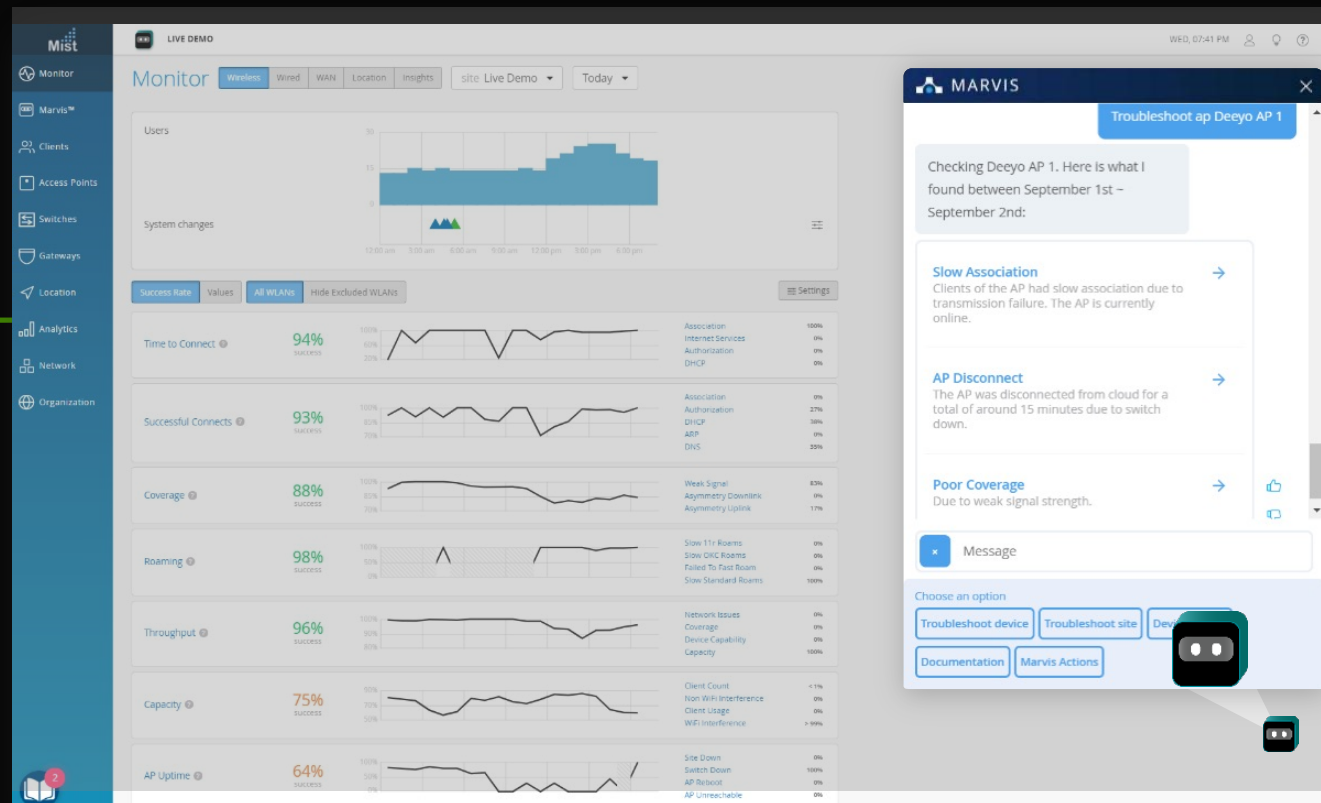
Conversational
AI Interface

Natural Language Processing/
Understanding (NLP/NLU) transforms
how IT interacts with the network.

Streamline operations and boost
operator experiences.

Provide deeper understanding of issues
with correlation across domains.

Simple knowledge base / documentation
queries (using GenAI/LLM).



Enable IT to be Proactive: “Up” is not the same as “Good”

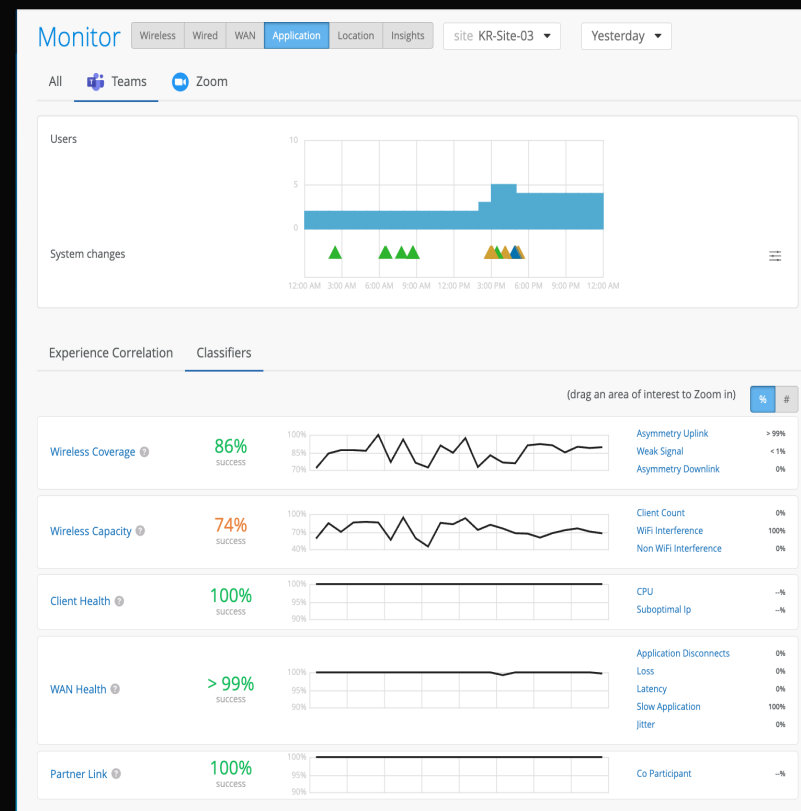
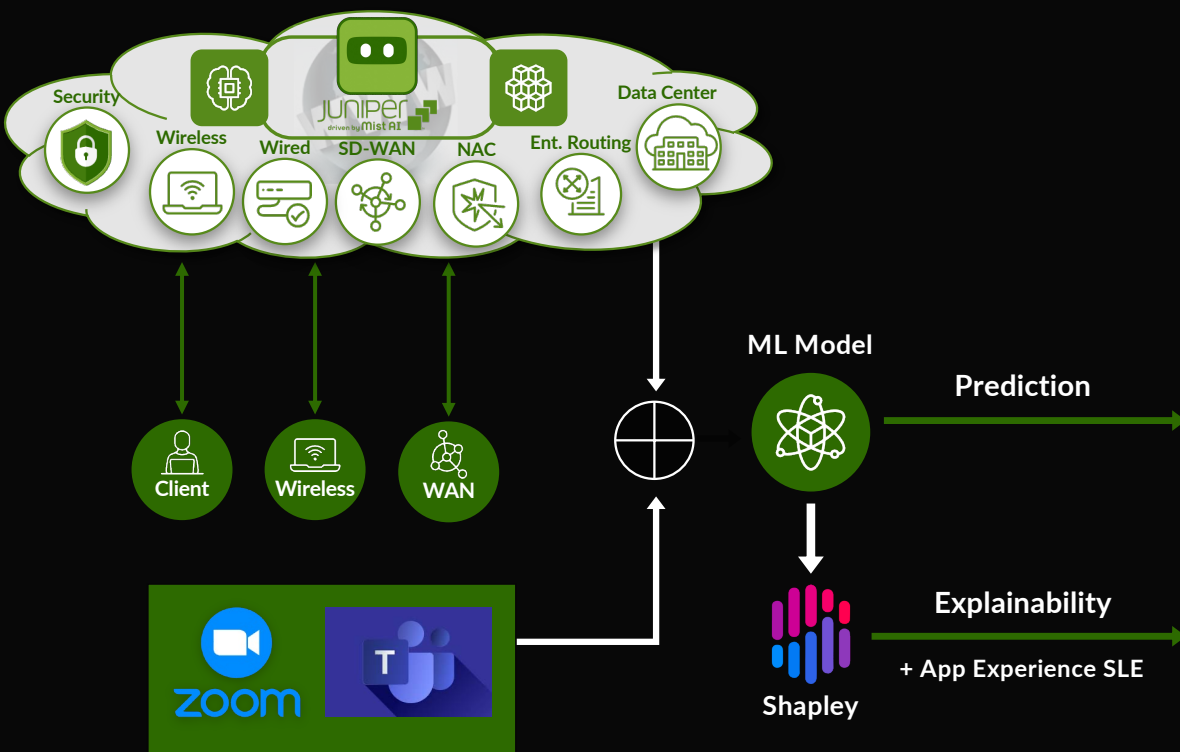
The screenshot shows a Microsoft Teams meeting interface. In the background, a man with a beard is speaking. Overlaid on the meeting is a troubleshooting diagram. At the top of the diagram is a blue box with the text: "Troubleshoot application MS-TEAMS for sujaih-mbp on Jan 6th between 3:00 PM to 4:00 PM." Below this is a network flow diagram. It starts with a user icon labeled "sujaih-mbp" with a green checkmark. A dashed line connects to a "Wireless" icon with a red warning triangle. A solid line connects to a "Wired" icon with a green checkmark and a "2" below it. Another solid line connects to a "WAN" icon with a green checkmark. A vertical dashed line connects the "WAN" icon to an "MS-TEAMS" icon with a code symbol. A yellow "BETA" label is in the top right corner of the diagram area. At the bottom of the Teams interface, there is a control bar with icons for "Join Audio", "Start Video", "Participants" (6), "Share Screen", "Chat", "More", "Record", "Reactions", and a red "Leave" button.

Predict Quality of Zoom/Teams Calls

New: Marvis Application Experience Insights

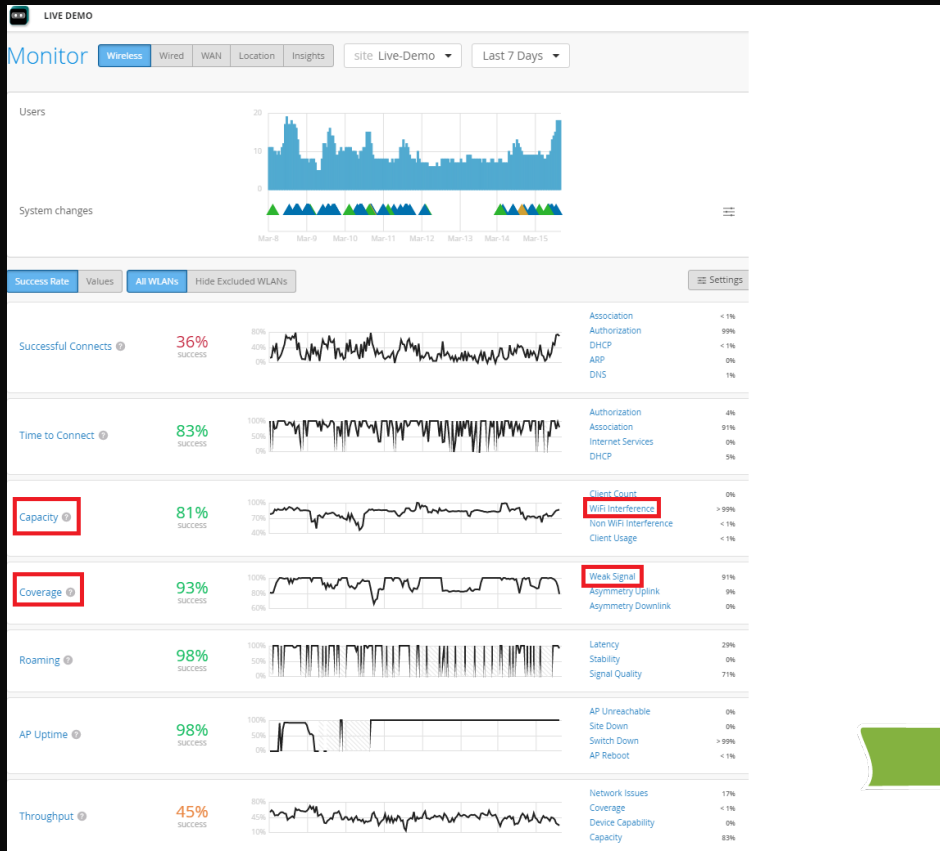
Customer Benefits

- ✓ Lowers troubleshooting costs
- ✓ Faster RCA
- ✓ Boost efficacy



AI-DRIVEN RRM

Capacity/Coverage/Roaming SLE Provide Feedback to RRM

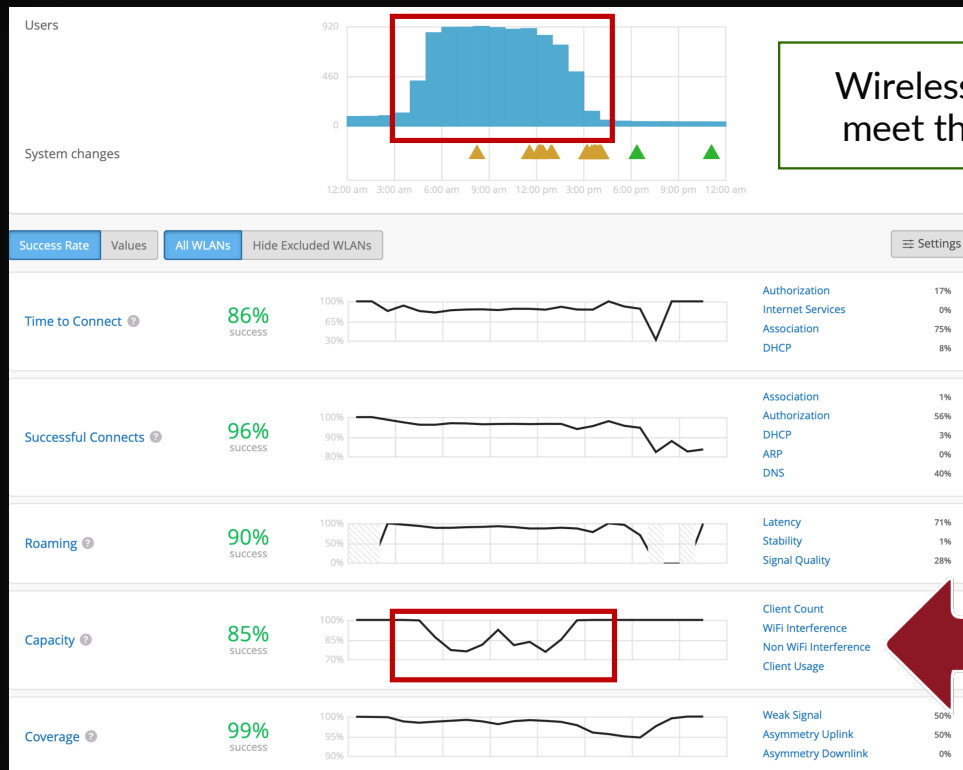


1. Poor user experience due to **capacity, coverage & roaming** is captured via the SLEs
2. Serves as a feedback loop to RRM to assess **impact of channel, power changes**
3. RRM makes changes both nightly & during the day to provide the **best user experience**

The screenshot shows the 'Radio Events' table with the following columns: Date, AP, Radio, Band, Channel, Channel Width, Power, and Event. A large green arrow points from the Capacity and Coverage metrics in the dashboard to this table.

Date	AP	Radio	Band	Channel	Channel Width	Power	Event
02:42:21 PM, Mar 8	LD_Marvis	5 GHz	5 GHz → 5 GHz	64 → 60	20 → 20 MHz	11 → 11 dBm	Radar detected
04:25:41 PM, Mar 8	LD_JS_W_AP	5 GHz	5 GHz → 5 GHz	136 → 52	20 → 20 MHz	10 → 10 dBm	Interference AP non wifi
06:06:07 PM, Mar 8	LD_MCB_AP	5 GHz	5 GHz → 5 GHz	36 → 60	20 → 20 MHz	10 → 10 dBm	Interference AP non wifi
07:05:08 PM, Mar 8	LD_Testbed_MD	5 GHz	5 GHz → 5 GHz	128 → 120	20 → 20 MHz	10 → 10 dBm	Interference AP non wifi
08:23:19 PM, Mar 8	LD_Testbed_MD	5 GHz	5 GHz → 5 GHz	120 → 108	20 → 20 MHz	10 → 10 dBm	Interference AP non wifi
08:45:51 PM, Mar 8	LD_Marvis	5 GHz	5 GHz → 5 GHz	60 → 64	20 → 20 MHz	11 → 11 dBm	Interference co-channel external
11:05:08 PM, Mar 8	LD_MCB_AP	5 GHz	5 GHz → 5 GHz	60 → 36	20 → 20 MHz	10 → 10 dBm	Interference AP non wifi
11:24:57 PM, Mar 8	LD_Marvis	5 GHz	5 GHz → 5 GHz	64 → 56	20 → 20 MHz	11 → 11 dBm	Interference co-channel external

Self-Optimization – Auto Cancellation, Dynamic Dual5



Wireless Network (as configured) is unable to meet the RF Capacity demands of end users.



TRIGGER – Capacity SLE Anomaly Detection

Marvis Action- Port Stuck



Has traffic gone to zero?
Dramatically dropped?

For each suspected port

F1: $\ln(\text{avg}(\text{Tx pkt}, \text{Rx pkt}))$

F2: $\ln(\text{avg}(7\text{-day historical baseline}))$

F3: $\ln(\text{avg}(\text{same site/same device type}))$

F4: $\ln(\text{duration in suspected mode})$

Suspected Ports with very low Tx/Rx pkts every 20min

[7 x 1]

Global Logistical Regression Model

Check POE Status

Marvis Action

Inference

Global Switch Data

Model is built / trained on global data and domain expertise

Modeling

Marvis Action- Wired Anomaly (Broadcast Storms)



?!?

Meta Data

Time of Day

Network Features

F1: Rx/Tx Dropped Pkts

F2: Rx/Tx Uni Cast

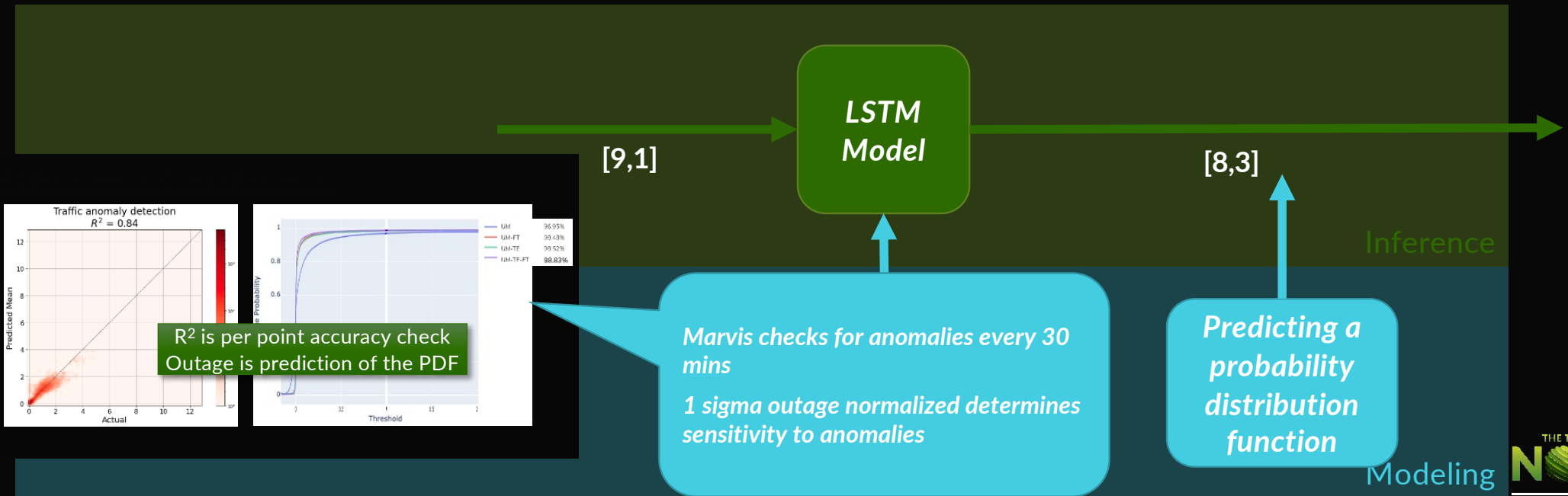
F3: Rx/Tx Broadcast

F4: Rx/Tx Multicast

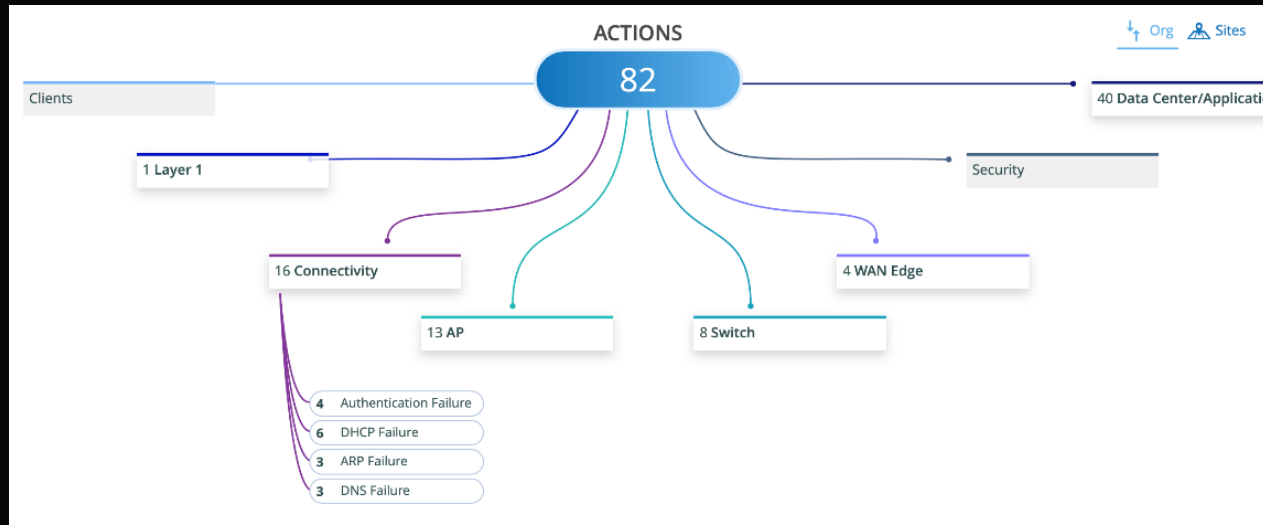
- Misconfigured Switch port
- Traffic Loop Detection

Upper Config Mean

Lower Config Mean



Anomaly Detection



AUTHENTICATION FAILURE



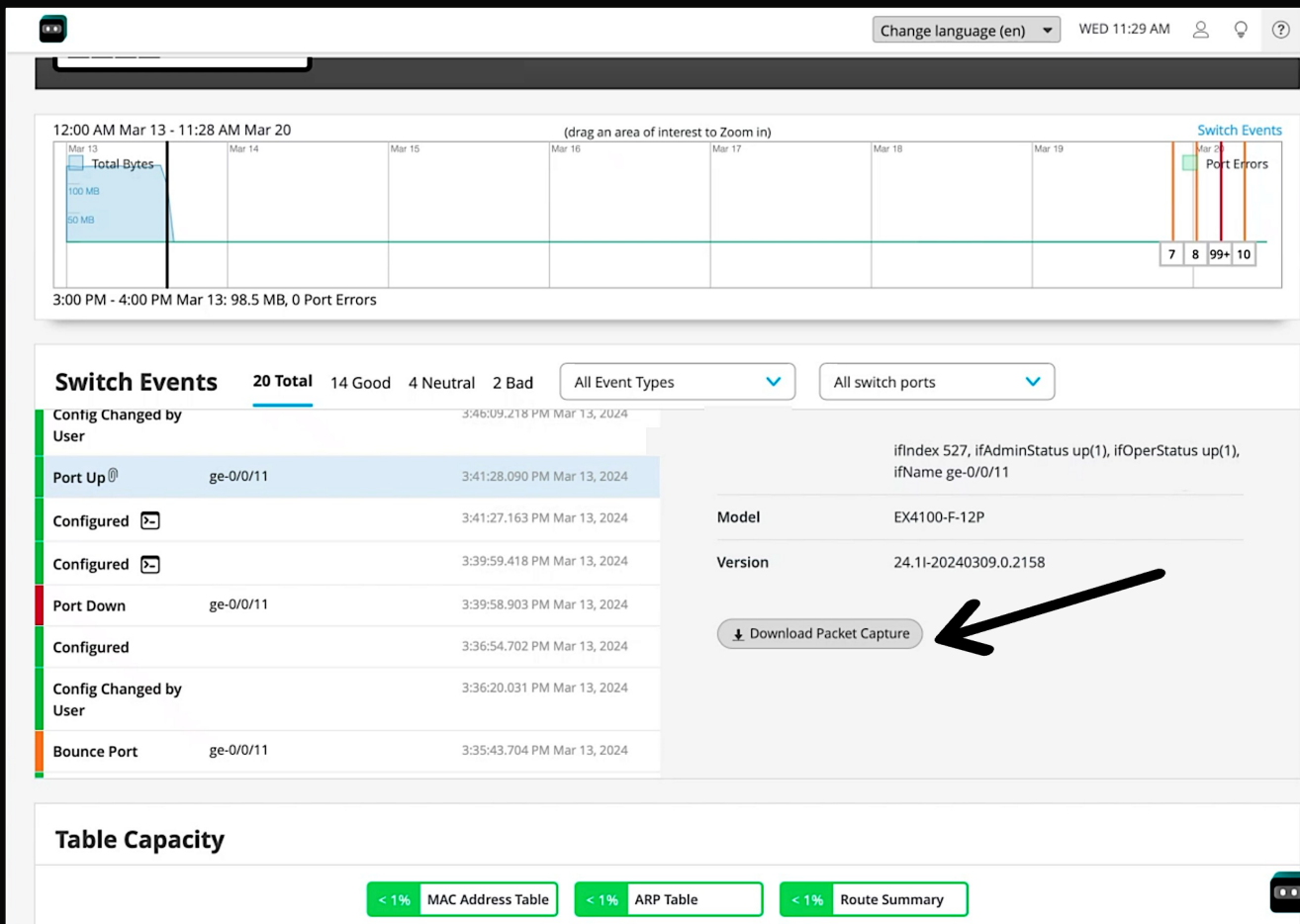
RECOMMENDED ACTION

The following sites have authentication failures. Please check the reason and details for each.

<input type="checkbox"/>	Site	Reason	Details	Date	Status
<input type="checkbox"/>	Live-Demo	WLAN Corp	View More	Jan 9, 2025 4:00:00 AM	Open ▾
<input type="checkbox"/>	Live-Demo	2 Switches	Affects 9 Clients	Jan 6, 2025 7:32:30 AM	Open ▾
<input type="checkbox"/>	Live-Demo	WLAN Mist_IoT	Affects 4 Clients	Jan 5, 2025 7:45:17 AM	Open ▾
<input type="checkbox"/>	Live-Demo	WLAN Mist_IoT	Affects 5 Clients	Jan 3, 2025 9:05:42 AM	Open ▾



Wired Dynamic Packet Capture (dPCAP) eliminates truck rolls



FEATURES

- Proactively capture packets at the time of a bad incident
- Data stored in cloud
- Easily rewind to time that error occurred

BENEFITS

- Diagnose intermittent issues that are almost impossible to diagnose
- Fast time to resolution
- Fewer truck rolls


LLM on Support Page


Support Tickets: **New Ticket** Cancel


Technology
 Wireless Switching SD-WAN NAC Location/Analytics Others

Ticket Type
Problem Specific Devices Impacted


Ticket Summary
AP blinking 3 LEDs

Impacted Sites Add Site 
KR-Site-02 (81d0ebd6-480e-4153-8a3e-94c9458057e8)

Impacted Devices Add Device 

Impacted Clients Add Client 

Knowledge Base Resources Found 10 resources

 **Assistant** BETA
AI Generated content

Summarized response (from mist/juniper docs): The AP blinking 3 LEDs indicates that it is not able to fetch an IP from the DHCP/static configuration.

DOCUMENTATION


Juniper Mist Wireless Assurance Configuration Guide: Reset an Access Point to the Factory-Default Configuration

Release the Reset button when the LED starts blinking with the pattern green-off-yellow-off. This LED behavior indicates that the AP has started to boot. When the AP completes booting, the LED starts blinking green and yellow. This LED behavior indicates that the AP is trying to connect to the Juniper...

DOCUMENTATION

AP LED is blinking yellow 3 times

Explanation: 3 yellow blinking lights on the LED means the AP is not able to fetch an IP from the DHCP/static configuration. There are two ways to assign an IP to the AP, either through DHCP or through the Static configurations. You can configure any AP manually on the Access Points page...



LLM on Chatbot

MARVIS BETA

Summarized response (from mist/juniper docs):

The AP blinking 3 yellow pattern indicates that the AP is not able to fetch an IP from the DHCP/static configuration.

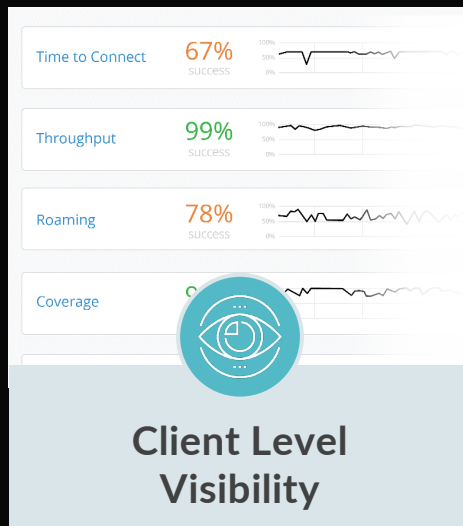
Here are some resources related to your query that can help.

- AP LED is blinking yellow 3 times**
Explanation: 3 yellow blinking lights on the LED means the AP is not able to fetch an IP from the DHCP/static configuration. There are two...
- Juniper Mist Wireless Assurance Configu...**
Release the Reset button when the LED starts blinking with the pattern green-off-yellow-off. This LED behavior indicates that the AP has...
- Status LED Blink Patterns**
A Juniper Access Point (AP) has one multicolor status LED that indicates various states as described in Table 1. Blinking red for 3 secon...

+ Message

Juniper Networks AI-Native Enterprise Solutions

Substantially Better
Key Differentiation

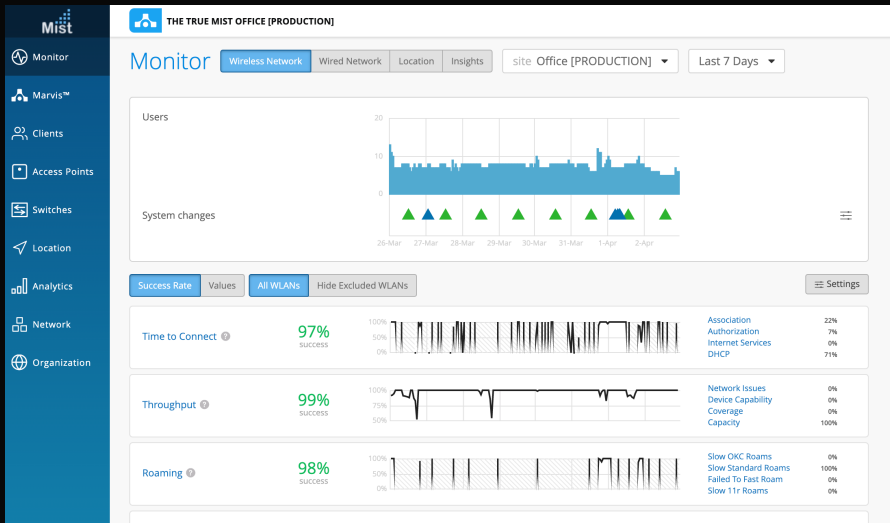


UNDERPINNED BY A 100% OPEN API DRIVEN ARCHITECTURE

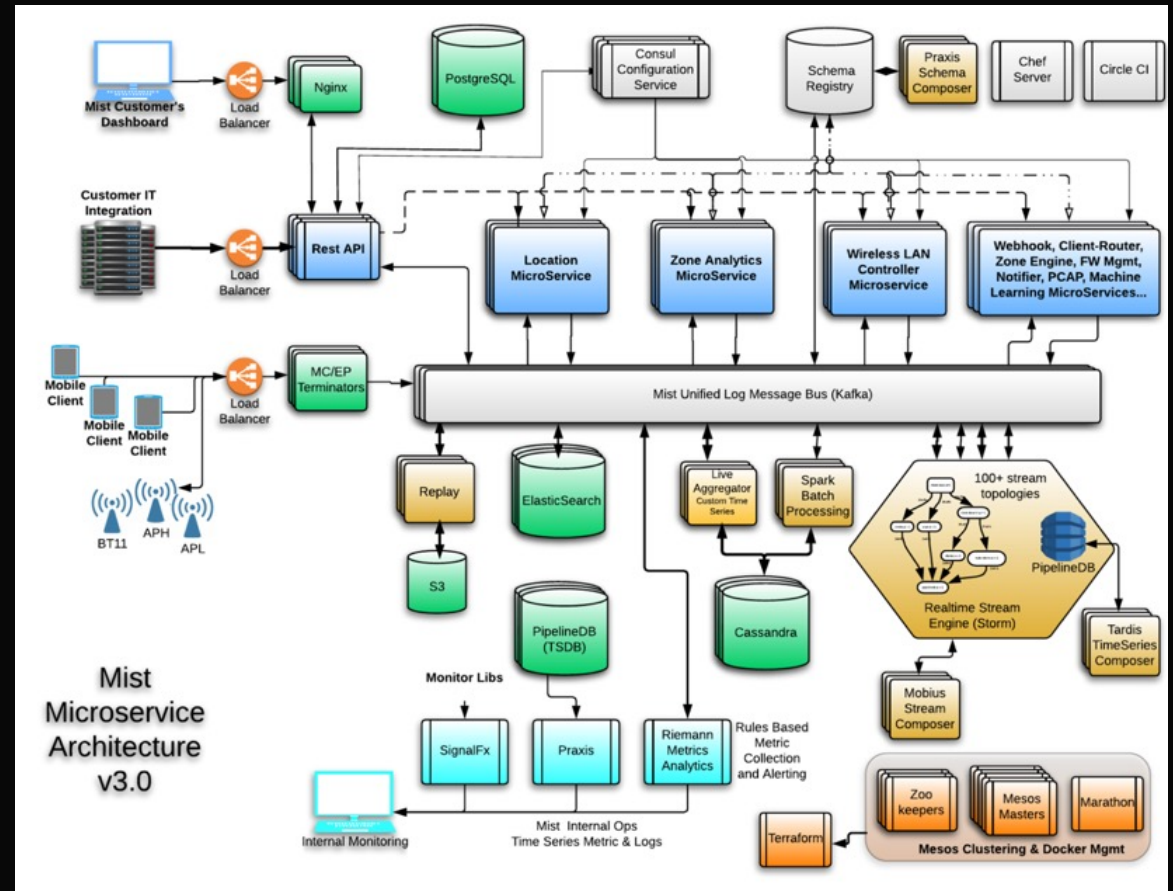
Delivered Across the Full Stack

Mirco-service stack

Customer View



Juniper Managed



5 minutes to get running

100% open API cloud platform

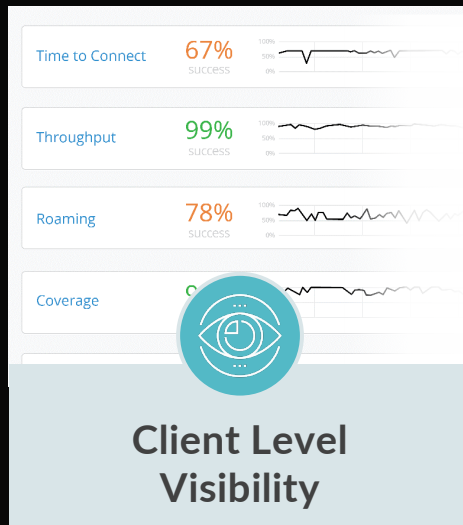
BEYOND THE NETWORK

EDUCATION	HEALTHCARE	GOVERNMENT	MANUFACTURING RETAIL	FSI					
SEA:5 Software The Open Social Platform Student Success Attendance Space Utilisation Student Wellbeing	Blackboard Virtual Learning Student Engagement	MyChart Patient Records Engagement Service Access	NHS App NHS Engagement Access to Resources	Honeywell Building Controls BMS Systems	MOTOROLA Handheld Devices	ZEBRA Customer Experience Back office	Wiliot Passive BLE Tags Connect Anything Connect Everything	Opportunity here	Opportunity here
Honeywell Building Controls BMS Systems	criticalarc SafeZone Incident Management Staff & Student safety	criticalarc SafeZone Incident Management Staff & Patient Safety	kinsetsu Asset Tracking Patient Experience Positive Healthcare	criticalarc SafeZone Incident Management Staff Safety & Security	LIMITLESS Customer Insight Customer Engagement	purple Intelligent spaces Data Analytics Wayfinding Customer Experience	criticalarc SafeZone Incident Management Staff Safety & Security	Opportunity here	
MIT Stanford University Imperial College London UNIVERSITY OF OXFORD GEANT Jisc	NHS Foundation Trust University Hospitals Sussex Kei VA U.S. Department of Veterans Affairs JYZ	OKLAHOMA Ministry of Defence	bp MARKS & SPENCER ebay classifieds group GAP ASTON MARTIN	sia Interactive Data UBS BARCLAYS					



Juniper Networks AI-Native Enterprise Solutions

Substantially Better
Key Differentiation



UNDERPINNED BY A 100% OPEN API DRIVEN ARCHITECTURE

Delivered Across the Full Stack

Foundations for Enterprise Class Location Services



Mobile apps for better user experience – compelling apps

Asset/Personnel Visibility

Engagement & Occupancy Analytics

AI-Native Networking with Wi-Fi & Location Services

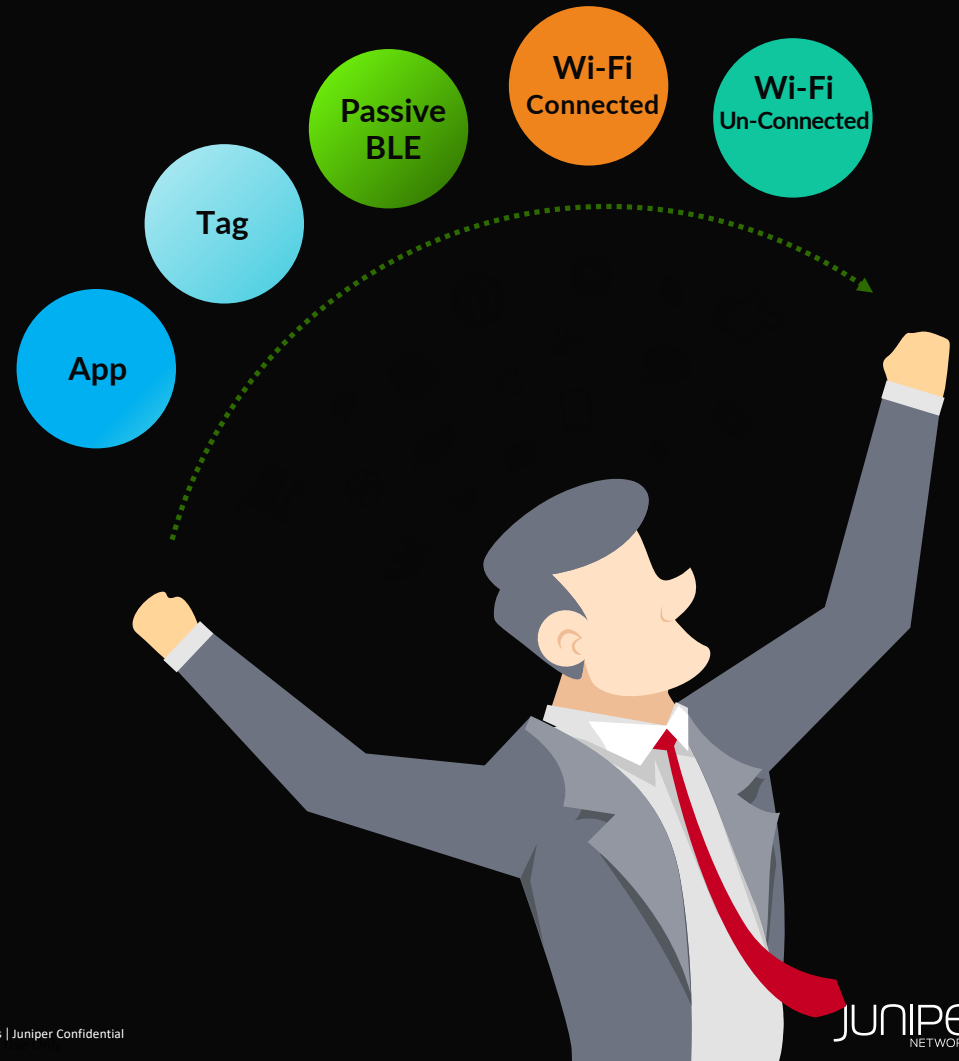


Five sources of location context

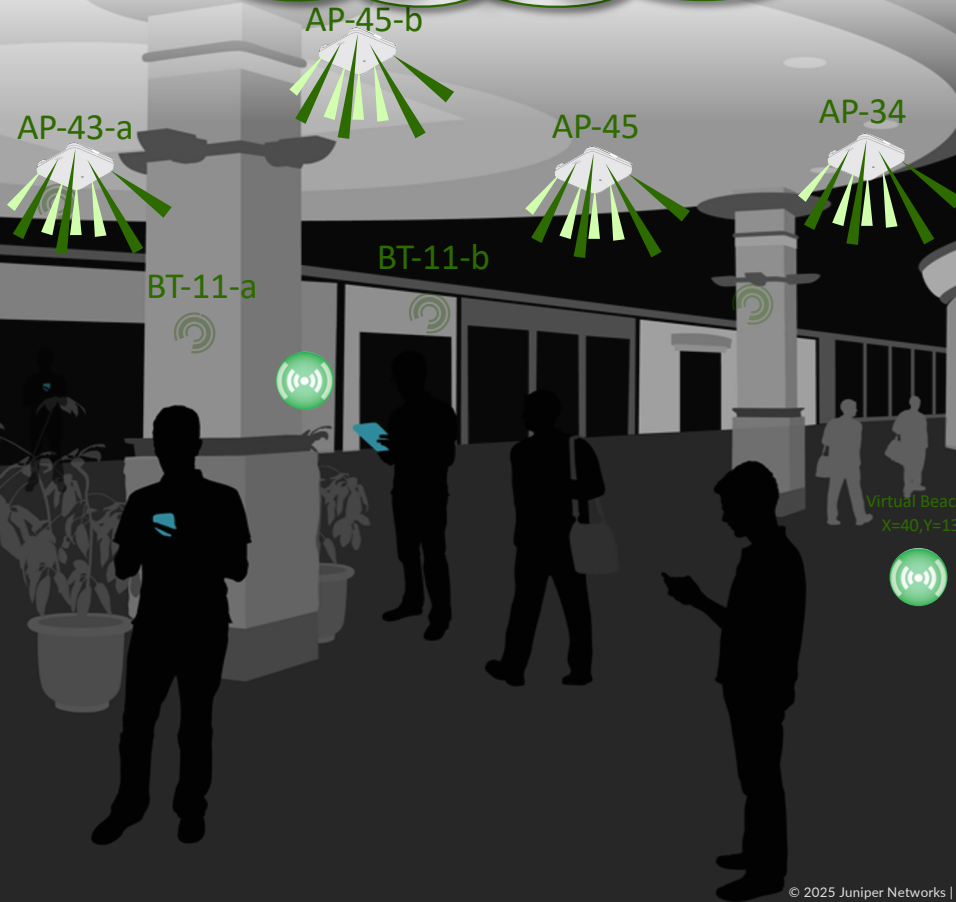
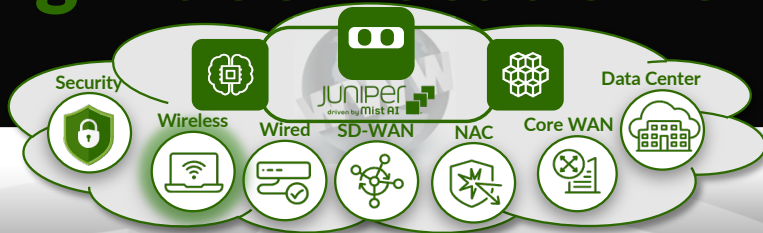
Mist Juniper Differentiation

- BLE Mobile App based tracking
- BLE Tag based tracking
- Passive listening to BLE devices
- Wi-Fi Connected Users
- Wi-Fi Unconnected Users

Standards based platform with Open APIs



Scaling indoor location experiences with V-BLE



Easily deploy and manage personalized BLE services

- Dynamic vBLE 16 antenna array
- Machine learning eliminates manual calibration
- Patented virtual beacons



	iPhone 6	Galaxy s6	iPhone 7	iPhone 6S	Variance	Median 59	Total	PLE	INT
AP 102					+1	-40	-19	-51	
AP 103					-1	-40	-19	-51	
AP 104				0	-5	-40	-19	-51	
AP 105					0	-40	-19	-51	
AP 106					+1	-40	-19	-51	
AP 107					-2	-40	-19	-51	
AP 108					-2	-40	-19	-51	

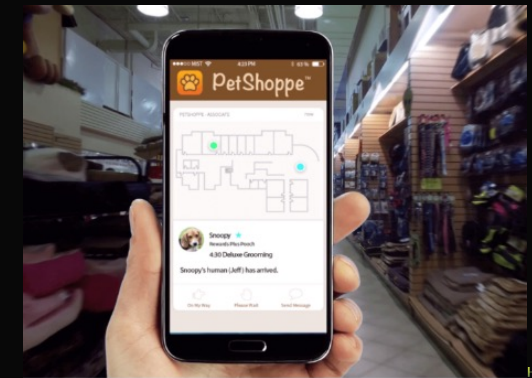
Mobile User Engagement



Flipping the indoor location model on its head.

With patented virtual Bluetooth LE (vBLE), indoor location is finally easy to deploy and scale, with unprecedented accuracy and agility.

- Real-time wayfinding
- Real-time proximity notifications and alerts
- SDK for mobile application integration
- Digital transformation with Network Insights and Location Analytics



ASSET VISIBILITY

The same infrastructure & Cloud platform for engaging with mobile users can be used for asset visibility.



- ✓ Get Full Visibility Into People /Things Using Standards- based BLE Services
- ✓ Locate people for Occupancy, Proximity Tracing
- ✓ Locate things/objects for operational benefits
- ✓ Employee Duress

A screenshot of the Mist network management interface. The main view is a floor plan of 'Corp Office West' with various rooms and desks. A sidebar on the left contains navigation options: Monitor, Monitor, Clients, Access Points, Subnets, Location, Analytics, Network, and Organisation. At the top right, there are tabs for 'Ruler', 'Wayfinding Paths', 'Beacons and Zones', and 'Setup Floorplan'. On the right side, there is a panel titled 'Clients' with a list of 11 client entries, each showing a blue person icon and a unique identifier.

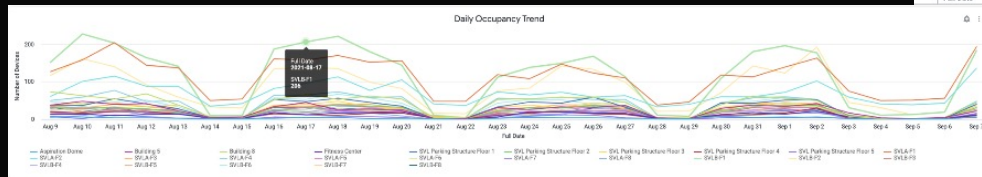
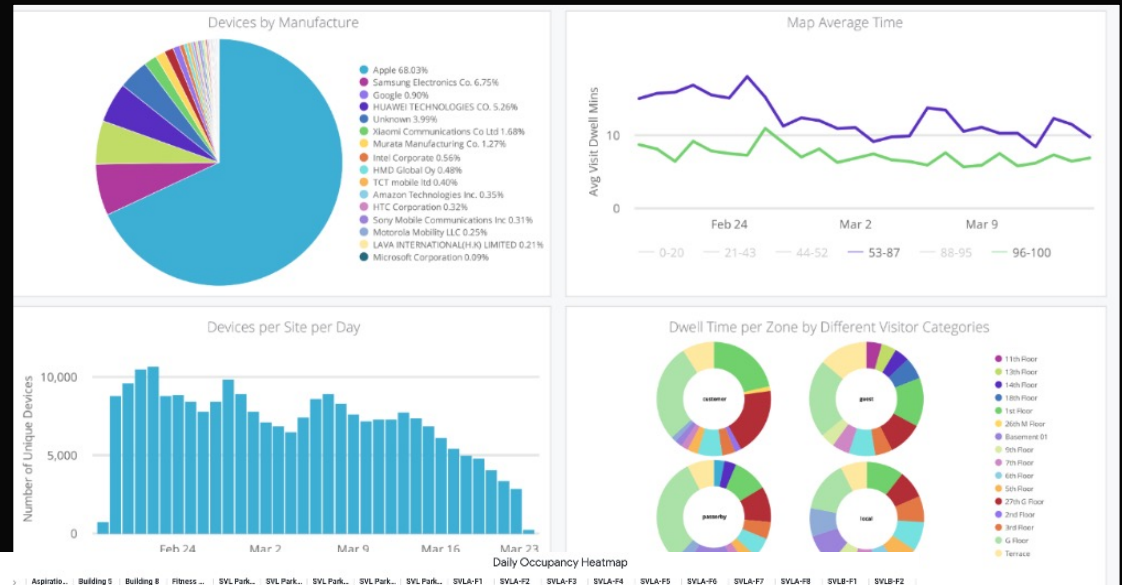
Premium Analytics

For leading enterprises, customer and employee engagement has become a top priority for digital transformation initiatives.



Popular engagement analytics use cases include:

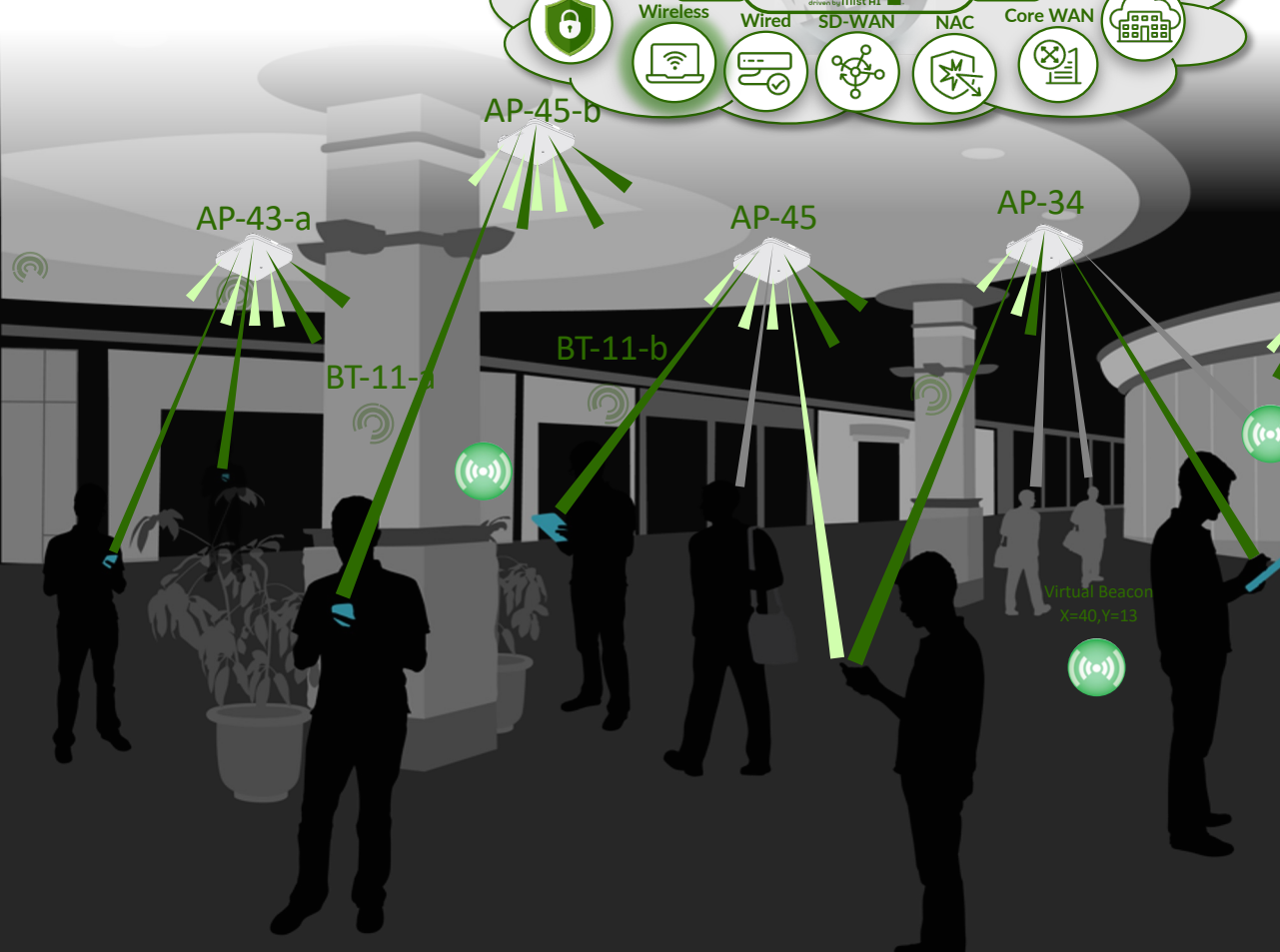
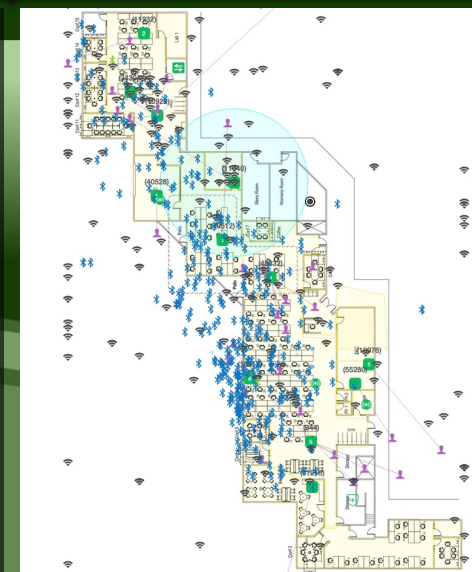
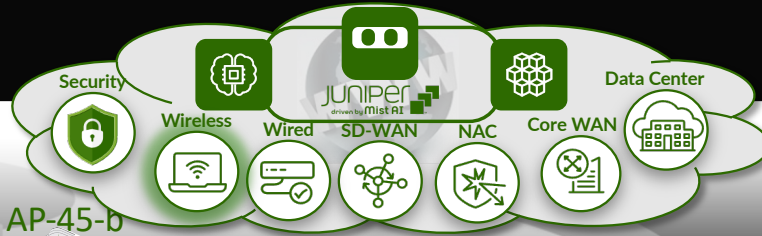
- Visitor Segmentation and Trends with Dynamic Categorizations
- Unique Visitor Trends with Popular Motion Flows for User Journey
- Occupancy and Engagement Analytics
- Enhancing Analytics with AI - Natural Language Inference (NLI) enabled



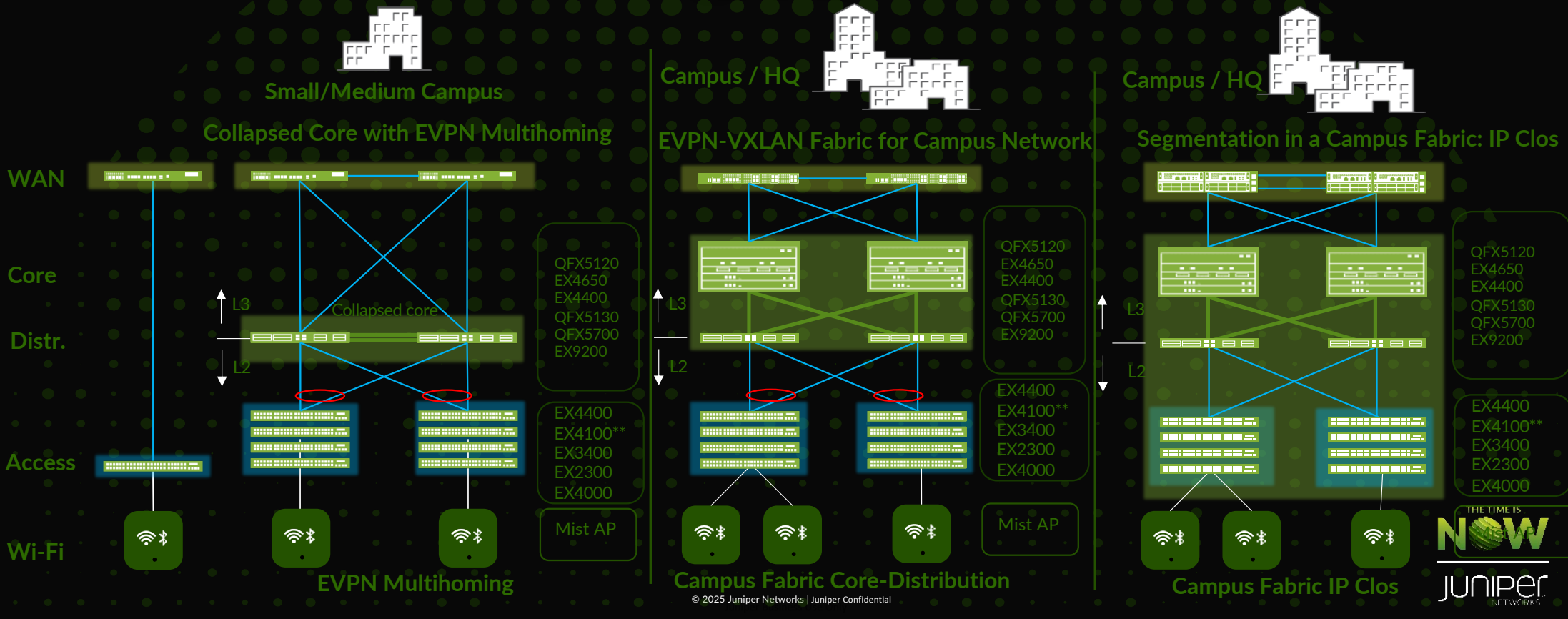
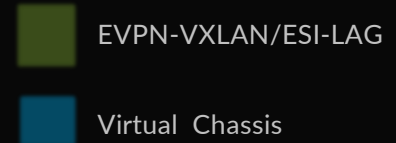
Name	Aspiration...	Building 5	Building 8	Fitness ...	SVL Park...	SVL Park...	SVL Park...	SVL Park...	SVL Park...	SVL-P1	SVLA-F2	SVLA-F3	SVLA-F4	SVLA-F5	SVLA-F6	SVLA-F7	SVLA-F8	SVLB-F1	SVLB-F2
8	38	70	13	38	39	36	20	7	127	61	56	50	31	39	15	5	152	117	
6	48	63	14	37	33	44	17	2	158	101	30	82	28	16	18	10	227	161	
4	40	54	10	55	29	44	21	12	204	115	40	77	39	34	36	25	203	140	
4	42	66	13	41	28	34	21	7	144	88	35	47	25	22	17	13	154	97	
3	22	38	14	29	19	38	14	3	137	88	27	49	27	21	15	18	141	99	
3	5	7	3	4	5	5	4	0	38	35	4	4	6	5	4	2	10	33	
2	6	5	2	4	4	4	4	0	54	42	2	3	3	1	2	1	10	30	
3	34	52	18	53	26	38	15	6	167	82	34	64	25	27	23	15	187	134	
5	62	66	12	47	27	40	12	4	157	96	34	65	32	16	20	15	206	138	
5	25	53	17	54	24	48	11	7	144	113	41	73	23	23	23	21	201	135	
2	27	67	18	45	18	34	16	7	152	77	40	58	30	23	19	17	180	90	
3	26	54	21	35	33	30	17	5	156	105	38	60	22	22	22	9	144	82	
2	2	5	2	2	1	6	3	0	48	41	9	1	2	0	1	1	11	16	
0	2	2	0	3	2	4	1	1	48	37	0	2	2	3	2	1	4	15	
3	37	59	6	23	23	21	11	3	119	72	27	56	20	19	14	9	112	75	



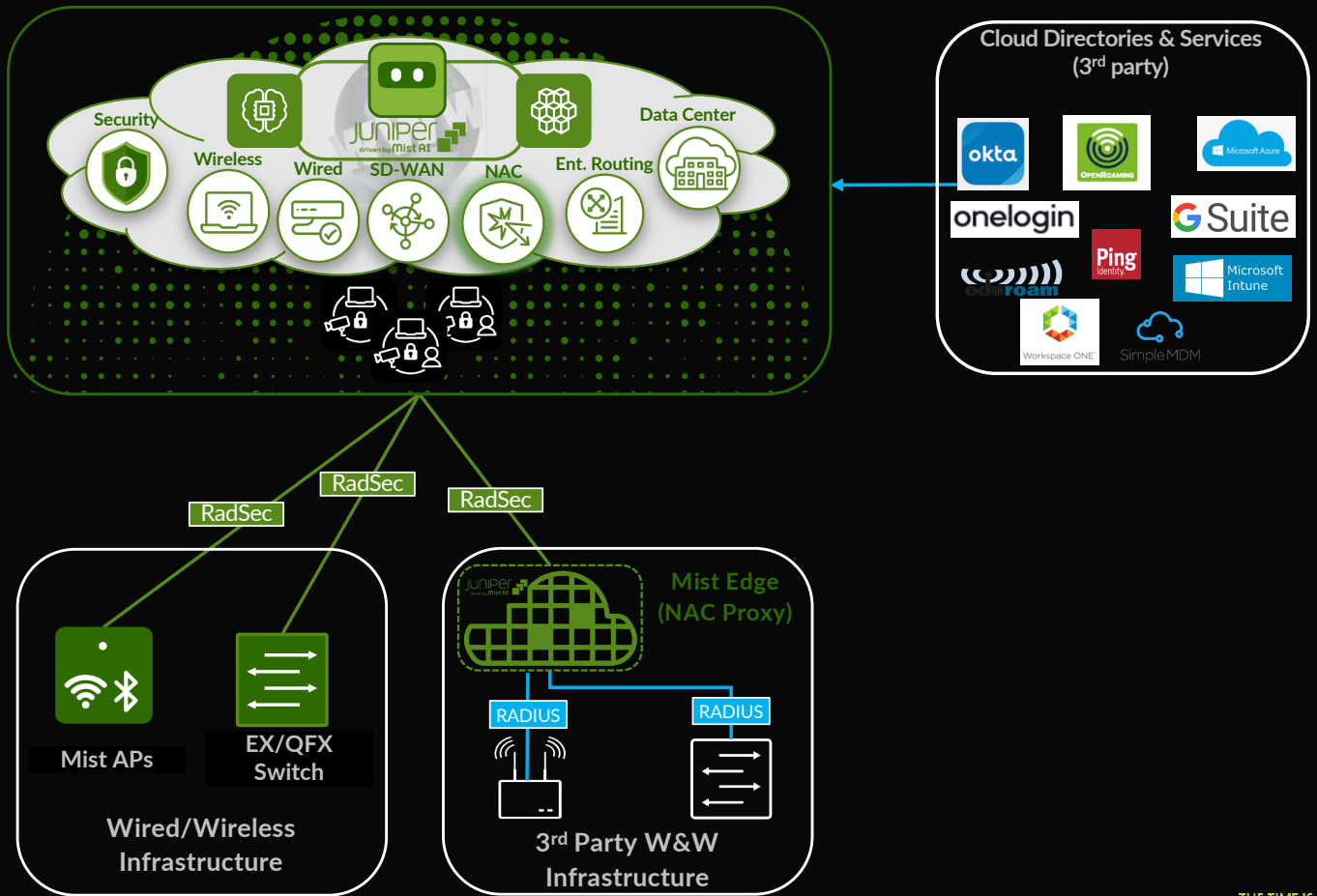
AI-Native Wireless LAN



AI-Native Campus-Branch Fabric Architectures



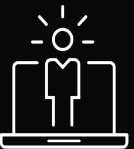
Juniper Mist Access Assurance Framework



Micro-Services based
Cloud NAC Offering



Industry-first AI powered
operations



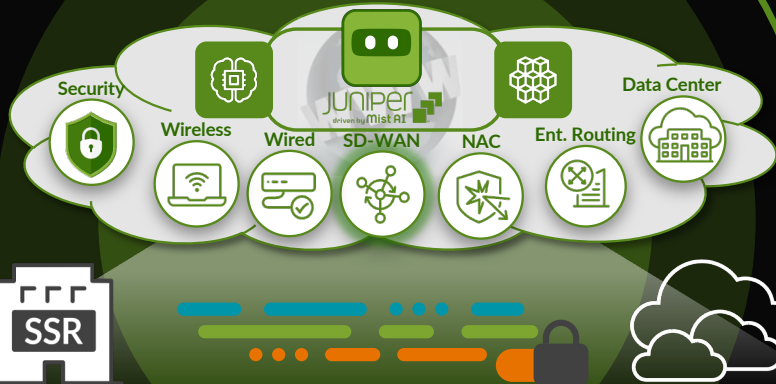
IT-friendly day 0-2 operations

The AI-Native Session Smart™ Router

Experience-first WAN routing software designed to deliver Zero Trust, high performance, and AI-driven automation and management.

AI-DRIVEN

Cloud-based, interoperability with wired/wireless, Assurance

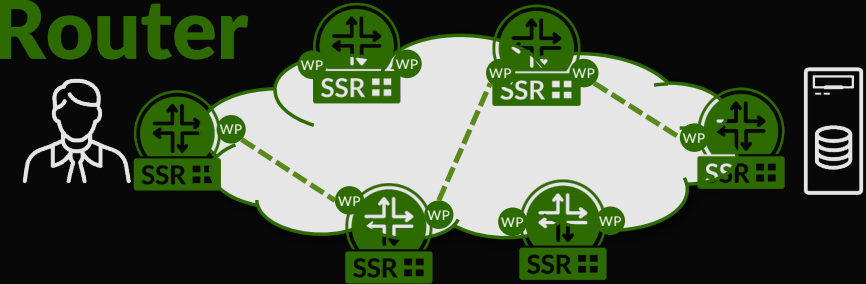


HIGH PERFORMANCE

Tunnel-free, session oriented, adaptive encryption

ZERO TRUST

Native security, deny by default, SASE-ready



Session Awareness

1 Know source, destination, and Directionality to connect related, bi-directional flows into sessions.

Session Centric

2 Understand named services and applications, service topology, and business policies.

Waypoint Setting

3 Determine lead packet, requirements, choose waypoints that mark best path right now.

Metadata

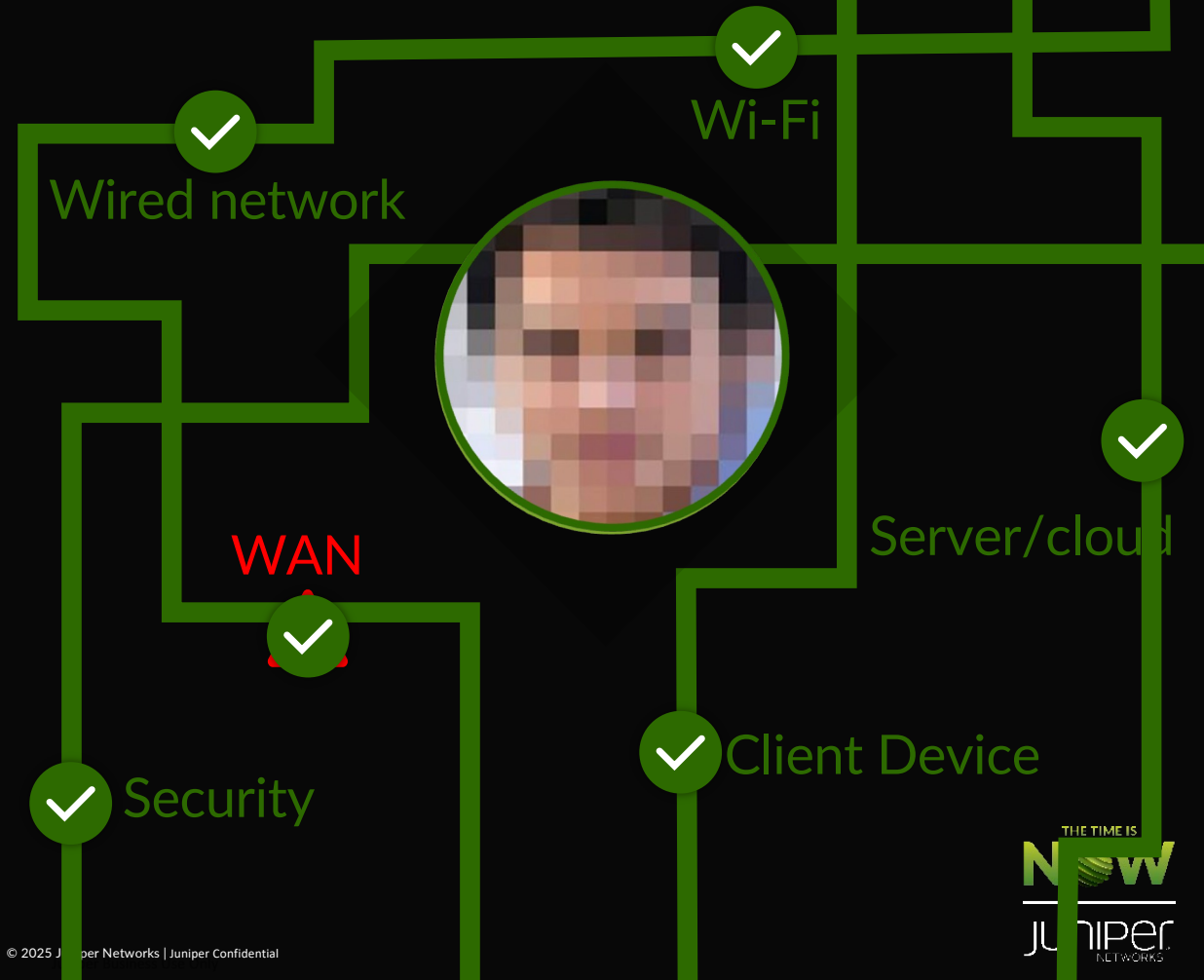
4 Metadata is encrypted throughout, extracted as lead packet reaches destination and eliminated on session completion.

AI Ops

5 streamlined deployment and operations, enhancing end user experience visibility, and significantly reducing SD-WAN

Optimize End User Experiences

Why is Bob having a bad video experience right now?





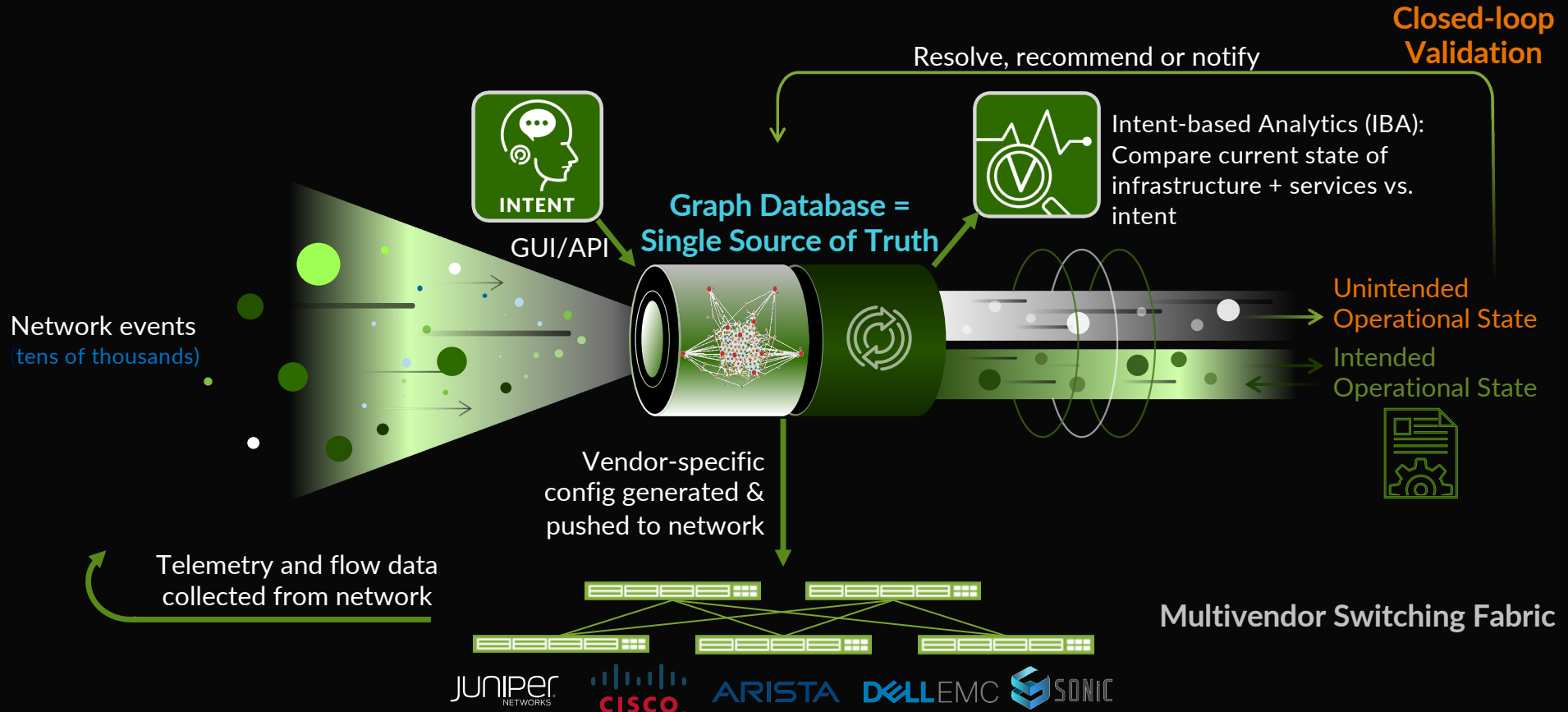
Extending the AIOps

- Data Center Assurance
- Enterprise Routing Assurance

Cloud-Ready Data Center

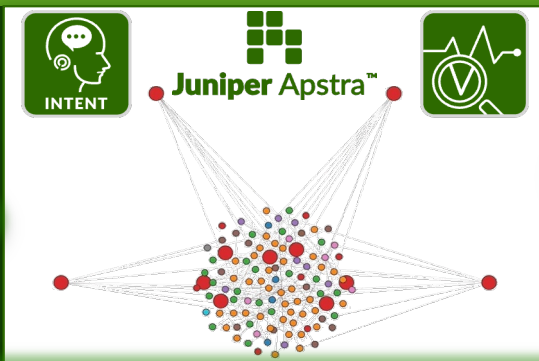


Apstra Intent-Based Networking



Continuous validation of operator intent ensures reliable operations.





MARVIS

ACTIONS: 0

Latest Updates: No actions for this time span.

Chatbot: Hello, Lunamal I'm Marvis, your virtual network assistant. Ask me a question about a Juniper product or service.

Dashboard Overview:

- Total Anomalies: 0
- All Probs: 0
- IP Pairs: 0/39
- Generic System Connectivity: 0
- License: 0/3
- Deployment Status: 0/9
- Route Verification: 0/10

Tools: Dig Deeper, Network Activity Intensity, QoS, Risk, Flow Data.

Flow Data

Visualizations: Multiple donut charts, bar graphs, and a world map showing global network activity.



Juniper Apstra: Intent-Based and AI-Powered For the Cloud Era – For the AI Era



RELIABILITY

→ Speed



EXPERIENCE

Intent-Based Networking
→ 320% ROI*



MULTIVENDOR

Strategic flexibility



SECURITY



AI Ops
App/Service Awareness

NOW

JUNIPER
NETWORKS

*Source: Forrester 2022

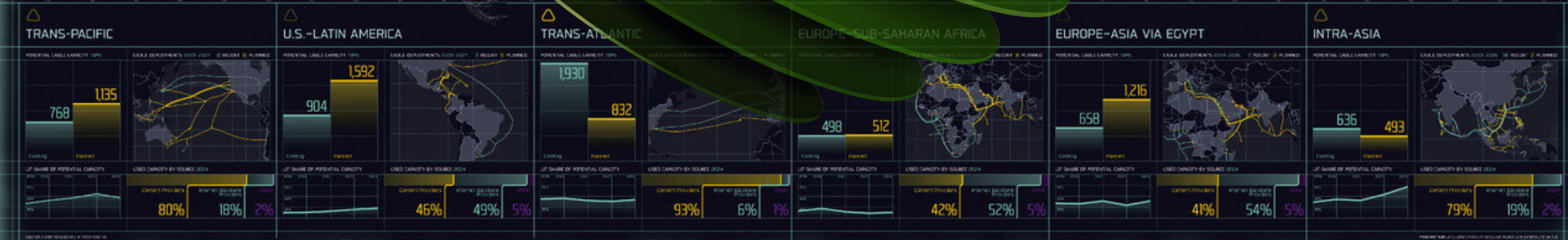
The Total Economic Impact™ of Juniper's Apstra Intent-Based Networking Solution

© 2025 Juniper Networks | Juniper Confidential

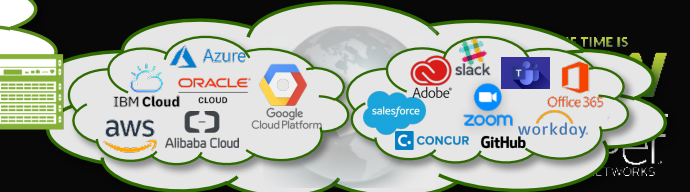
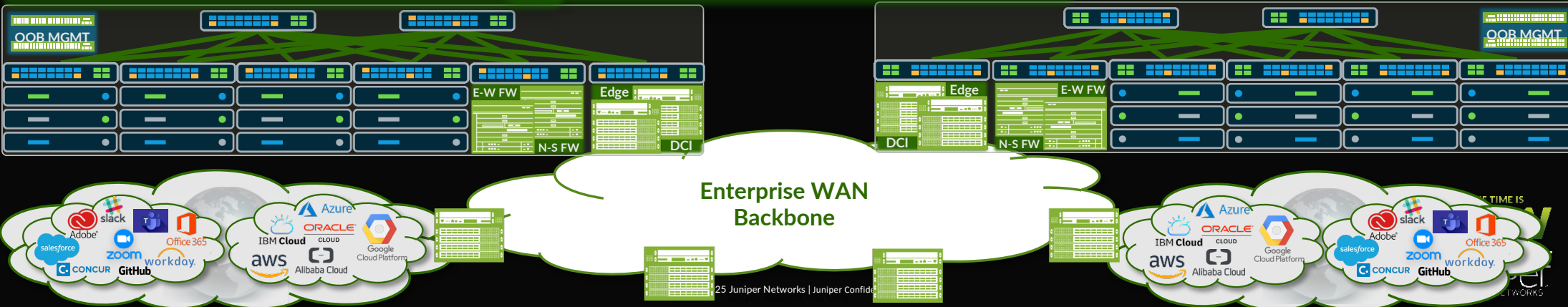
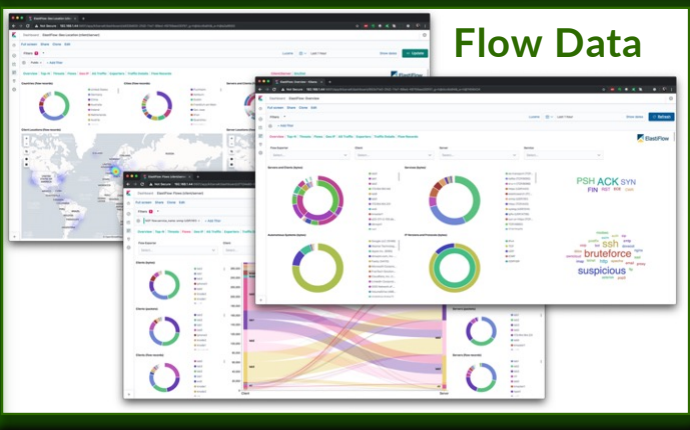
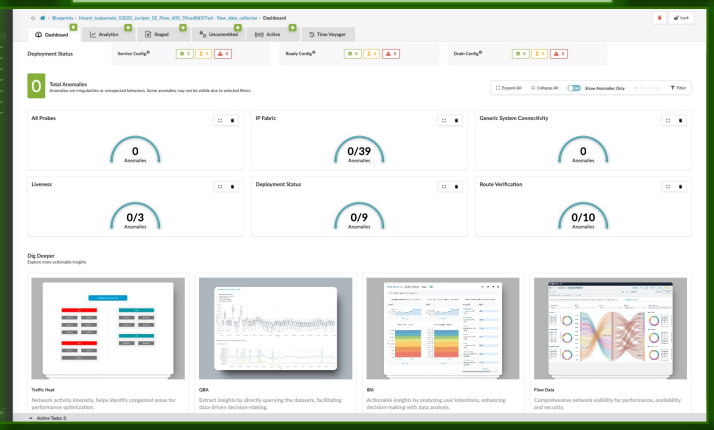
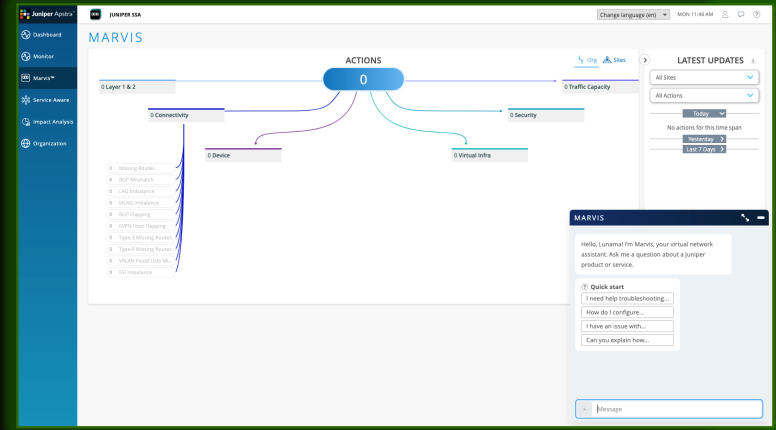
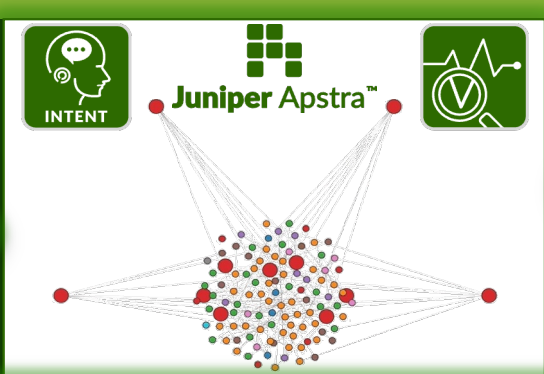
Automated WAN – Enterprise Routing



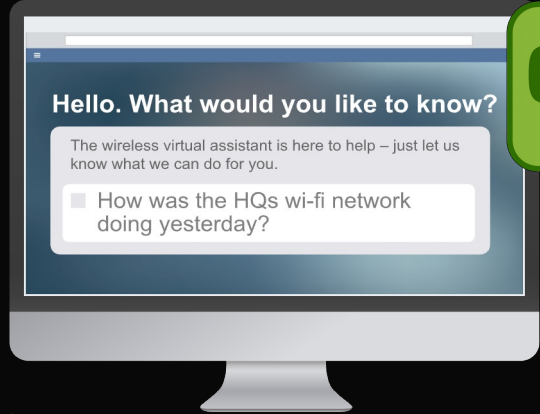
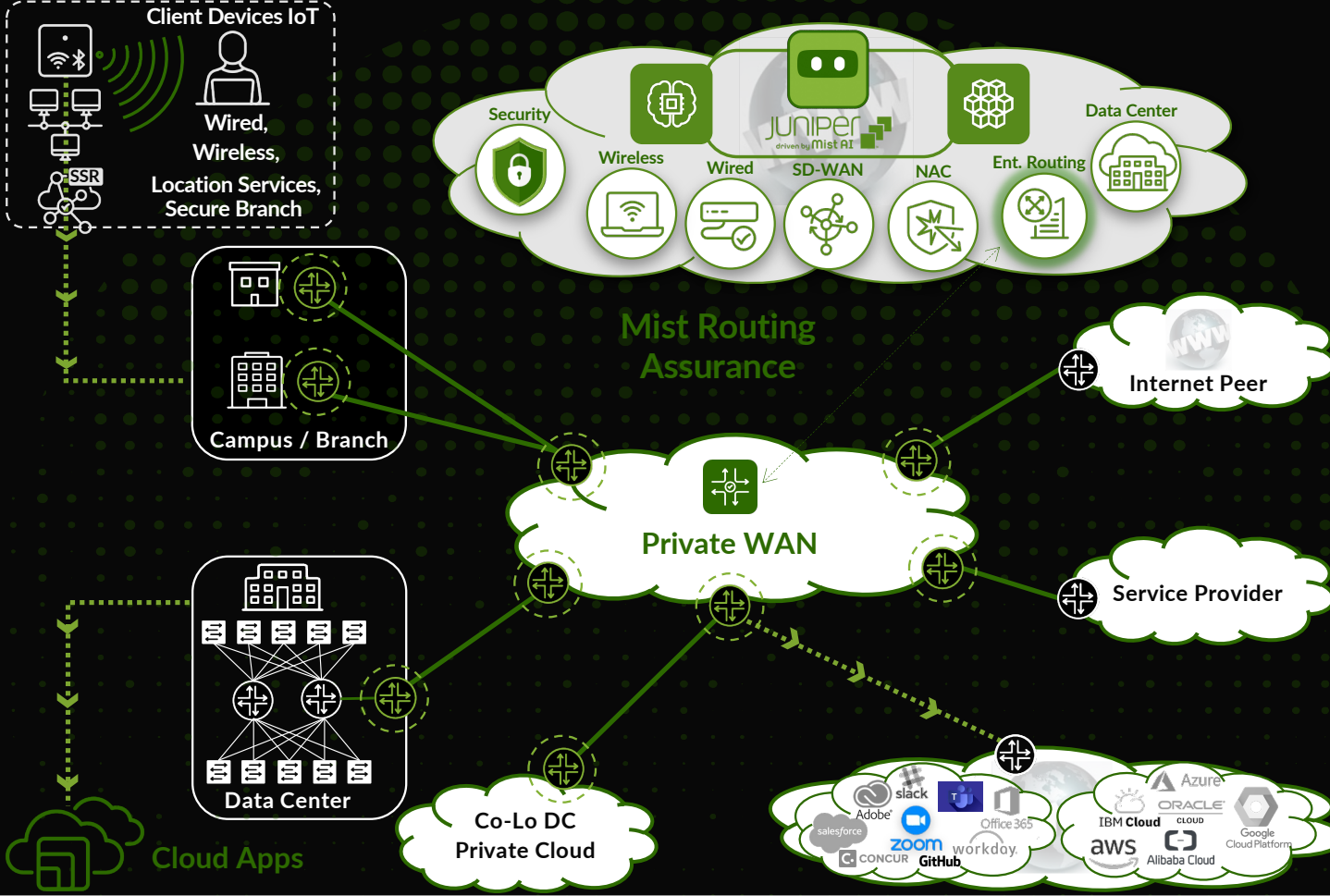
NETWORKS OF THE FUTURE



Source: Capgemini, in partnership with the International Telecommunications Union (ITU). Data is based on publicly available information and is subject to change. The data is for informational purposes only and does not constitute an offer or recommendation. © 2024 Capgemini. All rights reserved.

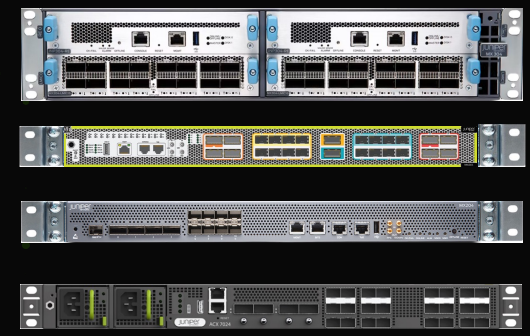


Juniper Enterprise Routing w/ Mist Routing Assurance



Marvis AI Assistant

AI-Driven Operations



Multi-service edge routers

High performance, sustainable, and versatile WAN routing platform

Unified Insights

Private WAN Edge	Internet Edge/Peering	Cloud Connect
Cloud-Native	End-to-End Assurance	Zero Trust Visibility & Enforcement

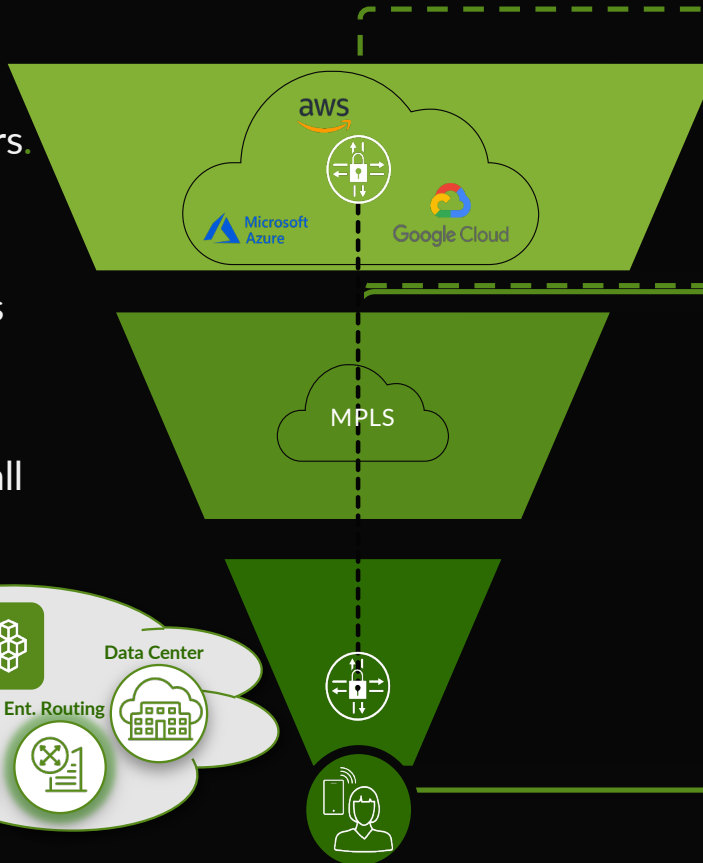
Juniper Mist Routing Assurance

• High performance, sustainable, and versatile WAN routing platform, Now with Mist AIOps



Routing Assurance

- ✓ Proactively detect and remediate Routing issues before they impact users.
- ✓ Simplify and automate operations, boosting productivity.
- ✓ Reduce MTTR with root cause analysis and actionable insights.
- ✓ One AI and cloud-native platform for all WAN edge uses cases.



Application **
100%
Success

- Latency
- Jitter
- Packet loss

SLEs (on the radar)

visibility into application performance

WAN Link *
21%
Success

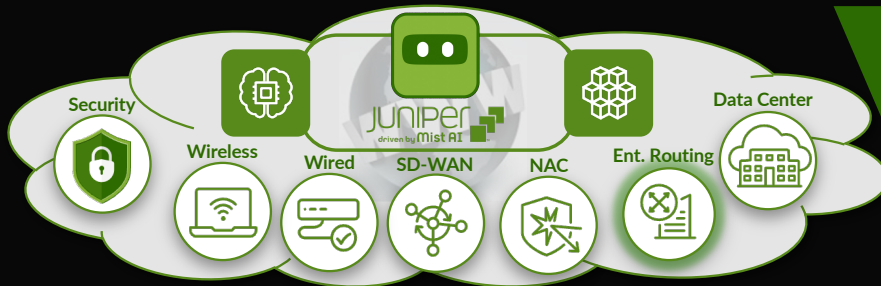
- Reachability
- Congestion
- Cable issues

SLEs

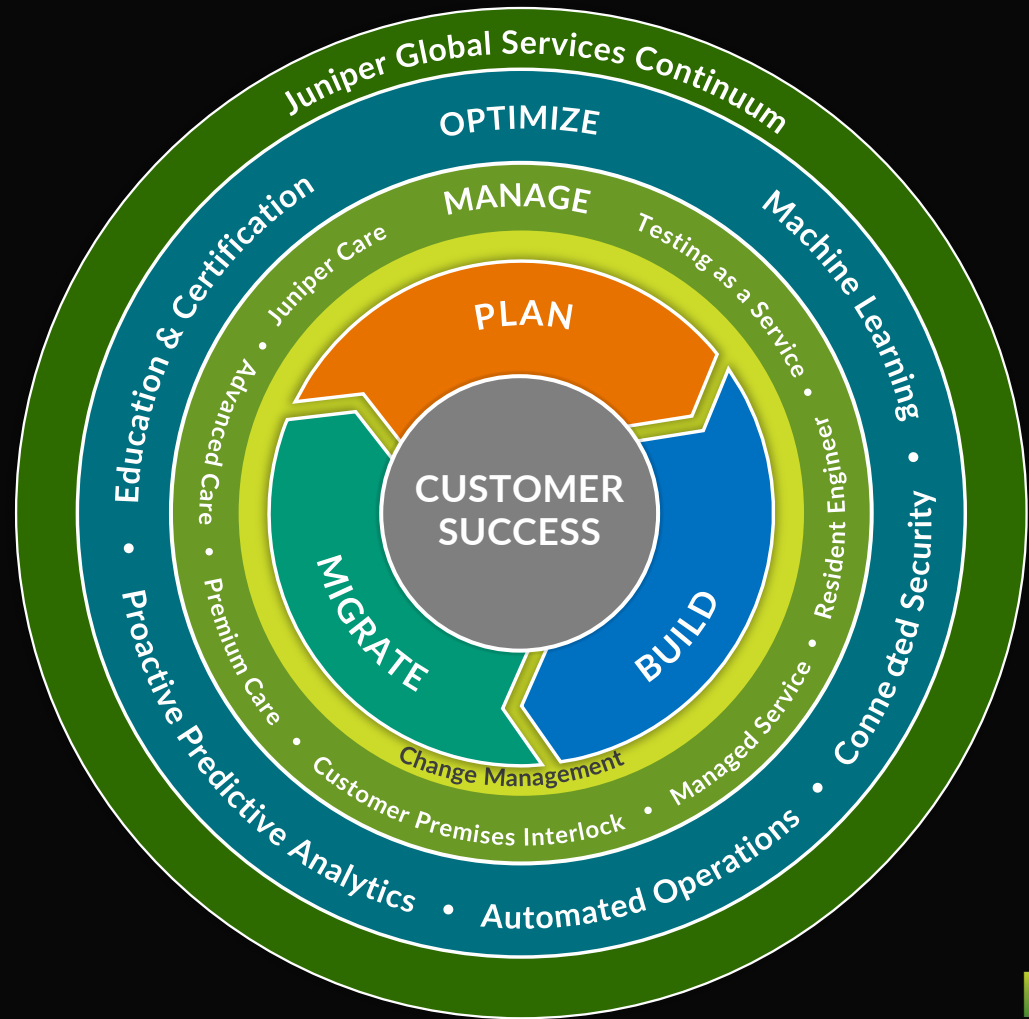
visibility into routing performance

Device
100%
Success

- CPU
- Power
- Memory



JUNIPER SERVICES



Our Services Portfolio



Prepare & Deploy

Assessment • Onboarding
Design • Deployment • Testing



Adopt

Juniper Care
Juniper Support Insights (JSI)



Grow

Upgrade • Migration • Optimization
Advanced & Premium Care

AI & AUTOMATED INSIGHTS

RESIDENT ENGINEER &
CONSULTANT

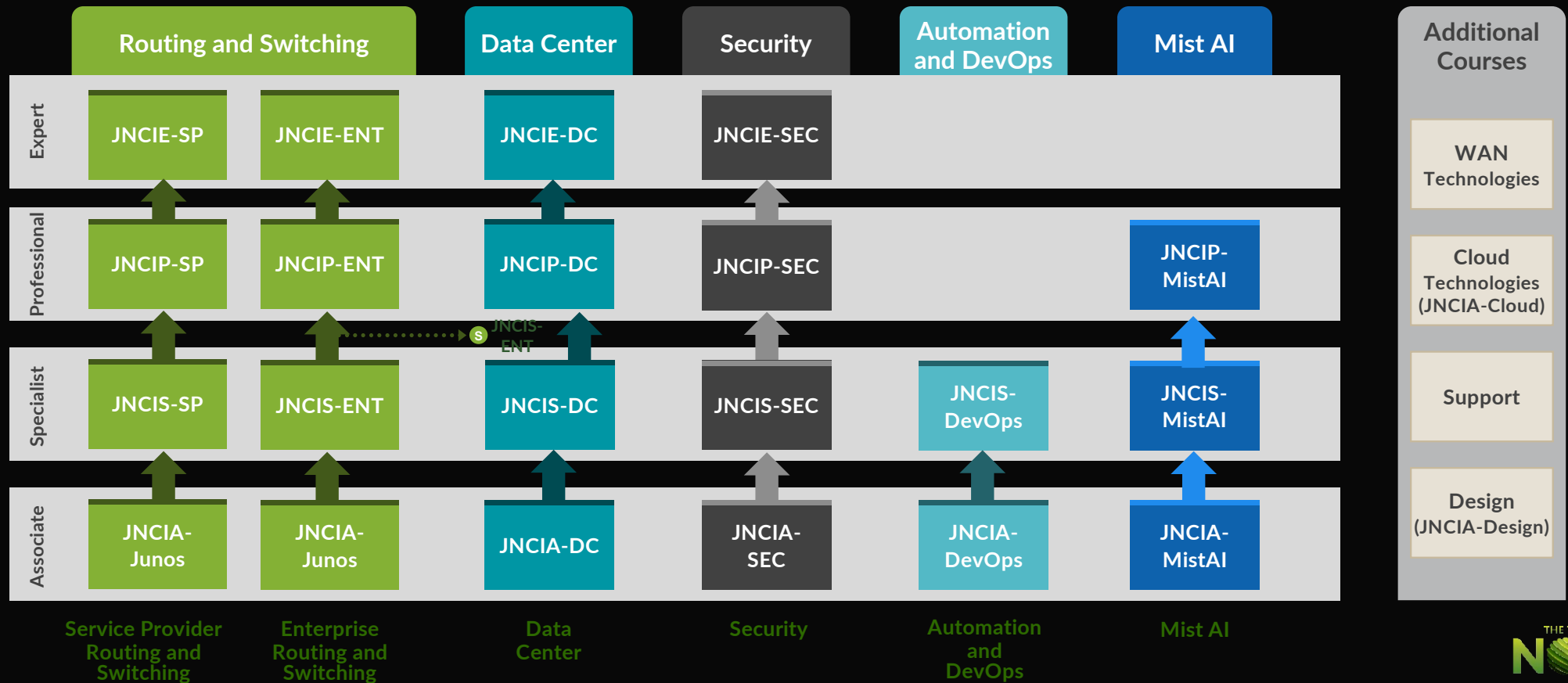
TRAINING & CERTIFICATION

Juniper Networks Education Services

Certification Program framework and additional courses

JUNIPER
NETWORKS

CERTIFICATION
PROGRAM



Information as of January 2025. Refer to www.juniper.net/certification for the most current information.
© 2025 Juniper Networks | Juniper Confidential

THE TIME IS
NOW
JUNIPER
NETWORKS



**Developers quickly and securely
share code around the world**

AUTODESK




**Shoppers find what
they need faster**

HALFORDS


FOR END USERS:

Flawless, personalized experiences



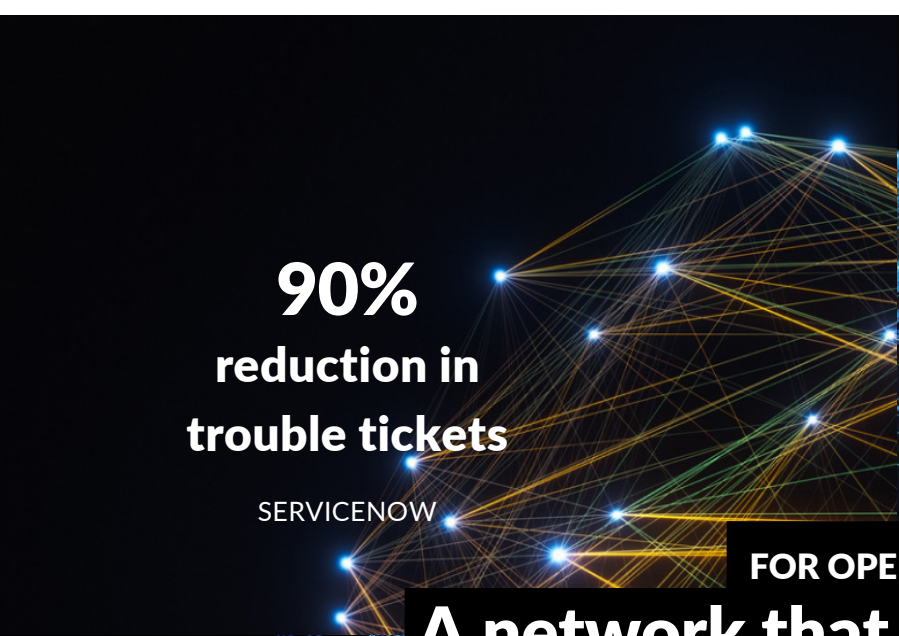
**Employees securely access business
applications more quickly**

AmeriTrust



**Students seamlessly connect with
each other anytime, anywhere**

MIT



90%
reduction in
trouble tickets

SERVICENOW

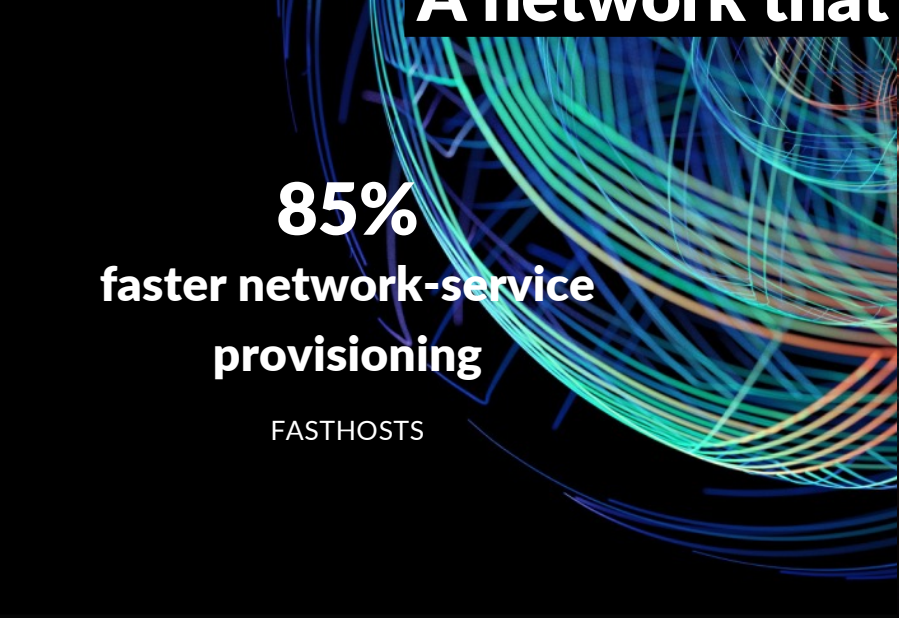


85%
fewer truck rolls
for onsite support

GAP

FOR OPERATORS:

A network that optimizes itself



85%
faster network-service
provisioning

FASTHOSTS



1000%
better reliability

ADVANIA

AI-Native Networking Platform Sustainability Benefits



Comprehensive AIOps

Reduces truck rolls by 85% in some instances.



Modular hardware

Simplifies repairs, reduces e-waste, and extends product lifetime.



Sustainable packaging

Reduces waste and shipping emissions.



Circular economy

Try and Buy
Juniper Certified Preowned

Reduces e-waste and ensures material optimization.



Power-efficient hardware

Reduces energy usage and lowers TCO.

A Trusted Partner Across Industries



10/10

Forbes top global
companies



30/30

world's largest cloud
providers



40/40

top global
service providers



17/20

the most prominent
universities globally



18/20

largest global banks



8/10

top global retailers



8/10

top technology companies

We make every connection count



© 2025 Juniper Networks | Juniper Confidential

WE IS
W
per
WORKS



Thank you