



Crossref Services for Librarians and Journal Editors

UbuntuNet

20 August 2025

What we will cover

- An introduction to Crossref - who we are and what we do
- Our Global Equitable Membership (GEM) program
- The value and use of metadata for content discovery
- Setting up independent membership
- Additional Crossref services for members
- Q&A



A decorative graphic on the left side of the slide, consisting of a complex network of white lines and dots on a dark blue background, resembling a circuit board or data network.

About us

Our mission

Crossref makes research objects easy to find, cite, link, assess, and reuse.

We're a not-for-profit membership organization that exists to make scholarly communications better.



Scale of Crossref

22,000 organisational members from **160** countries

- **50%** of members are based in Asia
- **40%** of members are universities or scholar-led

120 Sponsor orgs; **50** Ambassadors

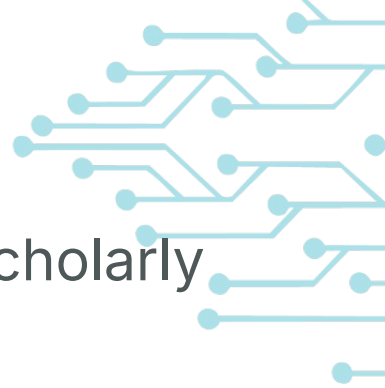
163 million open metadata records with DOIs that are resolved

1.3 billion times per month (**94%** of all DOI usage)

2 billion calls to our API every month by **0000s** (?) systems ingesting and reusing this open metadata

Why organizations join Crossref

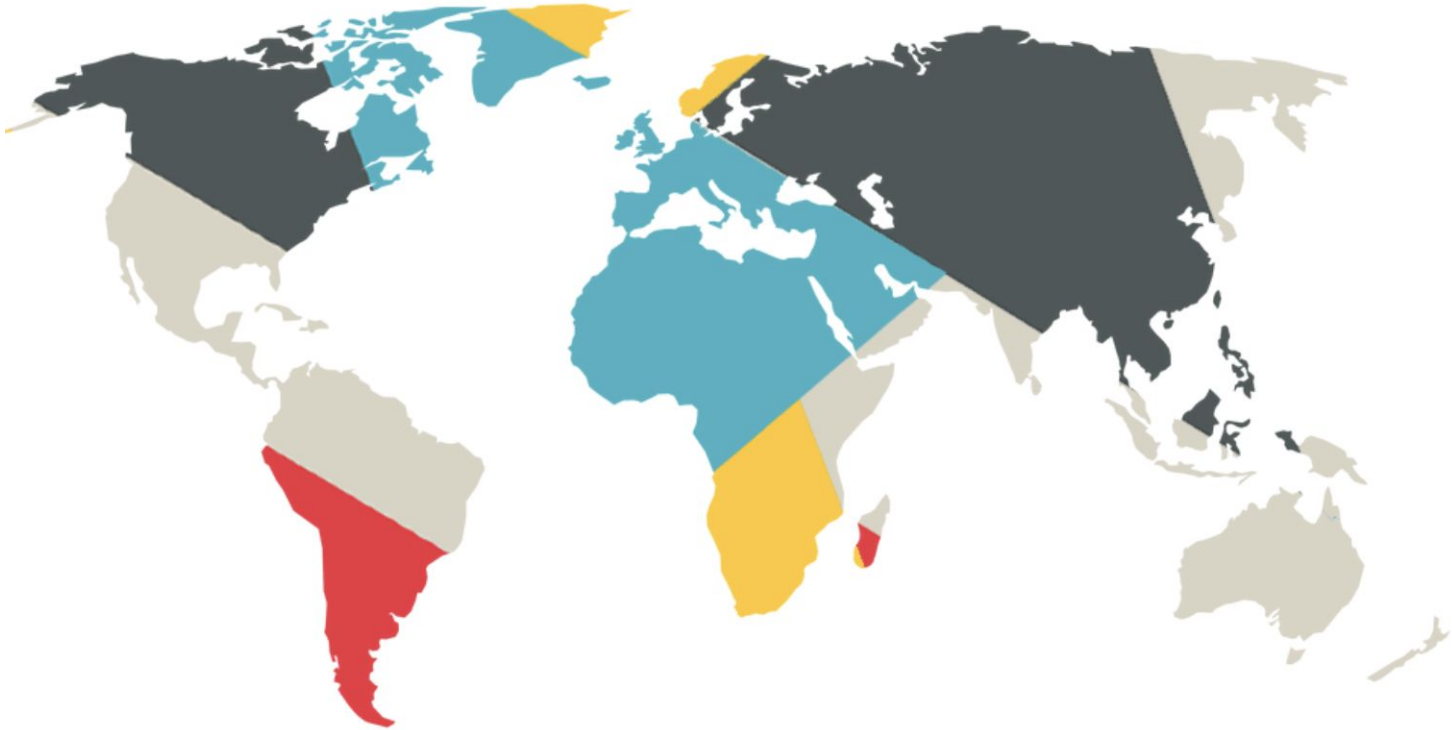
- Connect content with a global network of online scholarly research
- Create a persistent identifier for each object
- Improve discoverability of publications through robust metadata
- Find out who is citing your content
- Participate in other collaborative services





Global Equitable Membership (GEM) Program

A changing membership



Global Equitable Membership (GEM) program



Crossref
**Global
Equitable
Membership**

From Afghanistan to Zambia...

Announcing the new GEM Program, so that publishers in 59 countries have one less thing to worry about.

Afghanistan Bangladesh Benin Bhutan Burkina Faso Burundi Cambodia Central African Republic Chad Comoros Cote d'Ivoire Democratic Republic of the Congo Djibouti Eritrea Ethiopia Gambia Ghana Guinea Guinea-Bissau Guyana Haiti Honduras Kiribati Kosovo Kyrgyzstan Laos Lesotho Liberia Madagascar Malawi Maldives Mali Marshall Islands Mauritania Micronesia Mozambique Myanmar Nepal Nicaragua Niger Rwanda Samoa Sao Tome and Principe Senegal Sierra Leone Solomon Islands Somalia South Sudan Sri Lanka Sudan Tajikistan Tanzania Togo Tonga Tuvalu Uganda Vanuatu Yemen Zambia

25
Crossref
CELEBRATING 25 YEARS

GEM eligible countries in Africa



Benin (1)
Burkina Faso (2)
Burundi (1)
Central African
Republic (1)
Chad
Comoros
Cote d'Ivoire
Democratic Republic
of the Congo (6)
Djibouti

Eritrea
Ethiopia (7)
Gambia
Ghana (18)
Guinea
Guinea-Bissau
Mali (2)
Mauritania (1)
Mozambique
Niger
Rwanda (4)

Sao Tome and
Principe
Senegal (3)
Sierra Leone
Somalia (4)
South Sudan
Sudan (11)
Tanzania (11)
Togo
Uganda (7)
Zambia (5)

What does GEM cover?



No

- Similarity Check fees
- Metadata plus fee

Yes

- Annual member fee
- Content registration fees



25

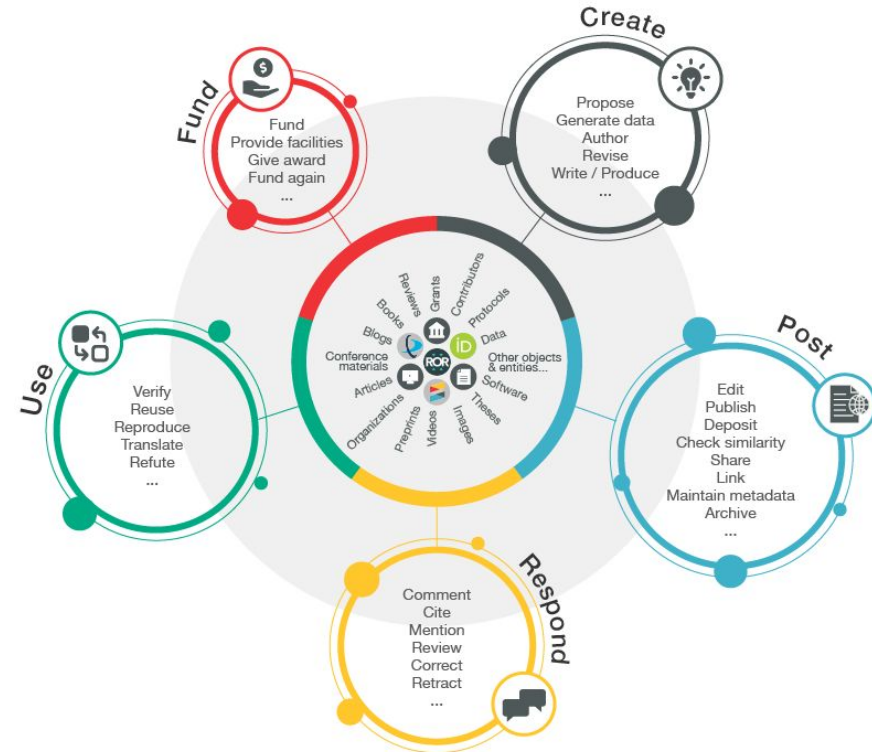
Crossref
CELEBRATING 25 YEARS

The value and use of metadata

The 'research nexus'

"A rich and reusable open **network of relationships**... a scholarly record that the global community can build on forever, for the benefit of society."

Metadata is the thread that is woven to produce such a network



What is metadata?

“Metadata is communication.

It describes and identifies an item, it defines relationships, it sets parameters for the range of actions something can engage in.

As the things we read, write, create, use, move around, and engage with become more digital, metadata becomes more important, because without metadata, all that movement, interaction, and discovery, could not happen.”

- Juliane Schneider, Metadata 20/20 blog, 2017
<https://metadata2020.org/blog/2017-09-14-metadata-and-communication>





What kind of <METADATA>?

Basic: titles; dates; author names; abstracts; DOI; location URL

Full-text URLs: e.g. for text-mining and Similarity Check

Crossmark: updates, retractions, corrections

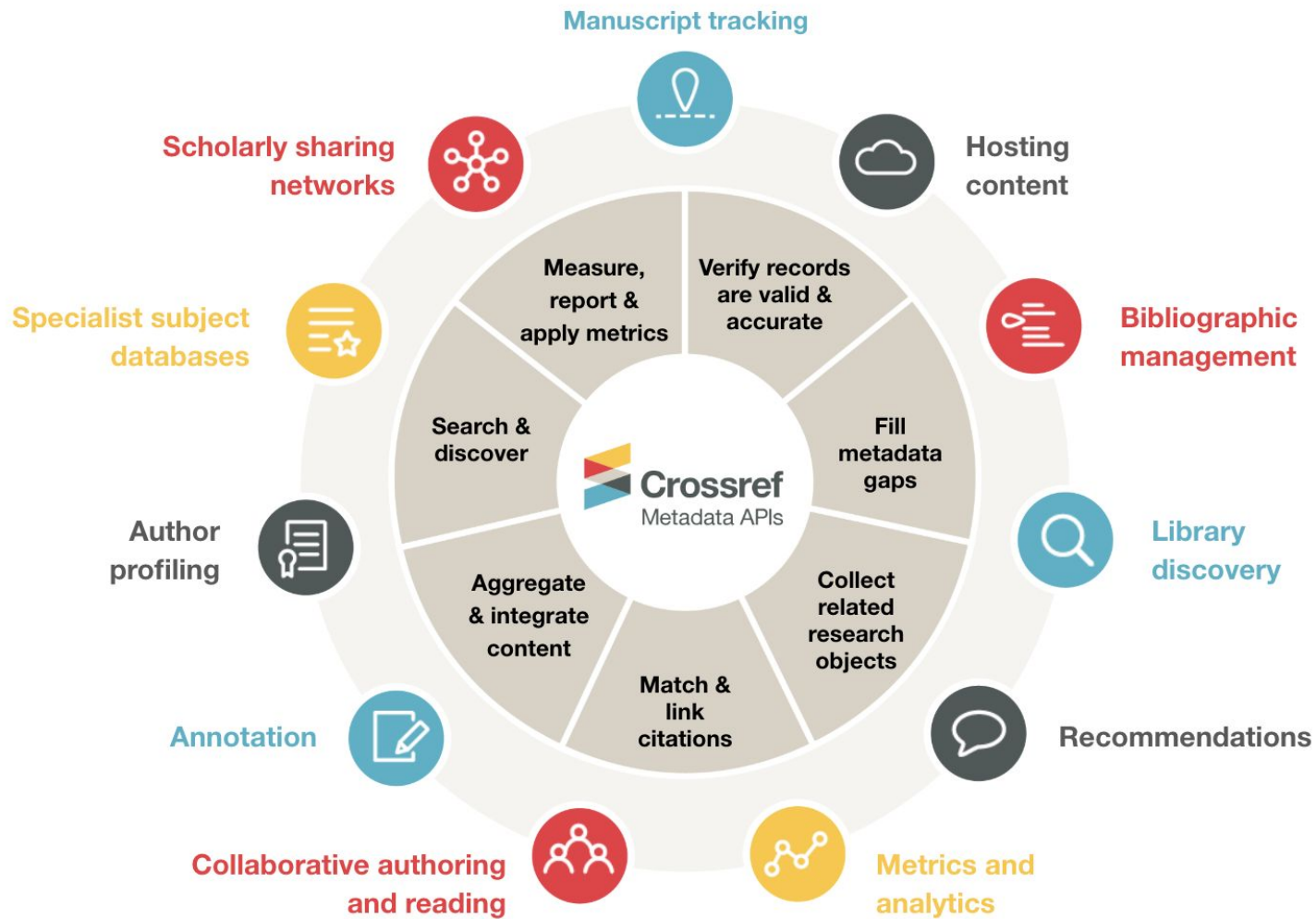
Relationships: versions; translations; data; references; citation

Provenance: publisher/funder/steward information

Subject-specific: e.g. clinical trial info

Funding information: Funder Registry ID; award numbers/Grant DOIs

Contributor & Affiliations: ORCID iDs and ROR IDs preferred



Metadata enables:

- Discoverability
- Reproducibility
- Research and editorial integrity
- Reporting and assessment



A decorative graphic on the left side of the page consisting of white lines and dots on a blue background, resembling a circuit board or data flow diagram.

Getting started as a member

A photograph of a wooden plank lying on a sandy beach. The word "JOIN" is spelled out on the plank using seashells. The letter "J" is formed by a vertical line of shells and a curved line of shells at the bottom. The letter "O" is a circle of shells. The letter "I" is a vertical line of shells. The letter "N" is formed by a vertical line of shells and a diagonal line of shells. The background is a mix of sand and a blue-tinted area on the left.

Become a member

A decorative graphic on the left side of the page consisting of light blue lines and dots that resemble a circuit board or data flow diagram.

<https://www.crossref.org/membership/>

The logo for Crossref's 25th anniversary. It features a large, stylized number "25" in blue and teal, with a circuit-like pattern inside the numbers. Below the "25" is the word "Crossref" in a bold, sans-serif font, and below that, in a smaller font, "CELEBRATING 25 YEARS".

25
Crossref
CELEBRATING 25 YEARS

First Steps

We send you:

- Your unique prefix
- Login and instructions to set your password
- Review of the different methods for registering your content

What can I register at Crossref?

Journals & articles

Books

Book chapters

Conference proceedings

Datasets

Dissertations

Reports

Standards

Posted content (preprints)

Peer reviews

Grants

Relationships



How to register content

- New Record Registration Form
(<https://www.crossref.org/documentation/register-maintain-records/record-registration-form/>)
- OJS Crossref plugin (<https://docs.pkp.sfu.ca/crossref-ojs-manual/en/config>)
- Manual web deposit form (<https://apps.crossref.org/webdeposit>)
- Upload XML file
(<https://doi.crossref.org>)



Additional Crossref services for members

Crossref services

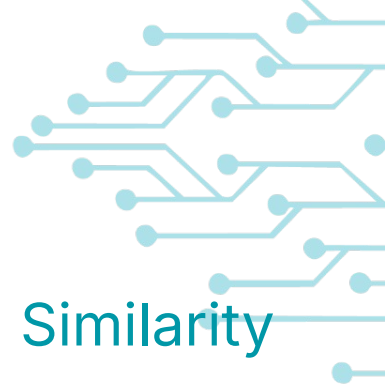
- Editorial decisions influence what research is communicated and how.
- Crossref tools help you assess a paper's originality, and properly label and connect updates, corrections, and retractions

Metadata and research integrity

- Editors would like to ensure the quality and integrity of what they publish
- Metadata helps with research integrity
 - **grant** records connect **full funding info**, including **funder**, **amounts**, and **funding type**, to works
 - metadata records identify the **member** responsible for the record, where the content lives (**URL**), **who** contributed and what their **affiliations** are

Metadata and research integrity

Similarity Check



- verify that an item was checked for originality via **Similarity Check**
- Similarity Check offers publishers with a way to actively engage in efforts to prevent plagiarism, using a service provided by Crossref and powered by iThenticate

<https://www.crossref.org/services/similarity-check/>

Metadata and research integrity

Crossmark

- Changes may happen to a work after publication: corrections, retractions, addition of supplementary information
- **Crossmark** provides a cross-platform way for readers to quickly discover the status of a research output along with additional metadata related to the editorial process

<https://www.crossref.org/services/crossmark/>

Metadata and discoverability: Reference Linking

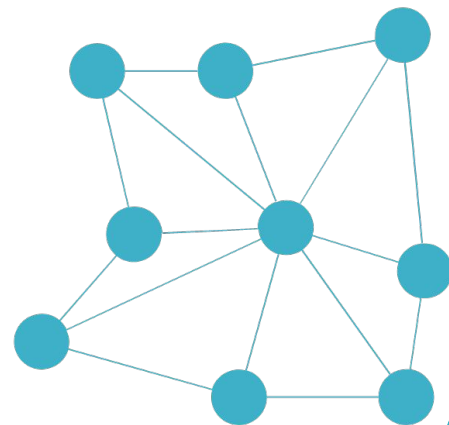
Using Crossref services maximizes the discoverability of the content you publish

- **Reference linking** enables researchers to follow a link from the reference list to other full-text documents, helping them to make connections and discover new things.
- Collecting information on who **funded the research**, **ORCID iDs** of authors
- **Abstracts** and **references** make content more discoverable
- Deposit the information you collect with Crossref so that it can be used!

<https://www.crossref.org/services/reference-linking/>

Metadata and reproducibility

- Use **relationships** to connect outputs to **data, software, protocols,** and other materials used to generate research



Metadata and assessment

- use **affiliation metadata** (including **ROR IDs**) to identify what institutions are aligned with what research
- identify **who funded what**, and what the connected outputs are (**preprints, data, conference papers**)
- identify reviews and comments via **relationships**



Cited-by

Cited-by provides an overview of the publications that have cited a piece of content helping to build a picture of how research has been received by the community.

<https://www.crossref.org/services/cited-by/>

Metadata enables connections

<https://search.crossref.org/>


Search the metadata
of journal articles, books,
standards, datasets & more

[Search help](#)

Search funders connected to
published works with funding data

Participation Reports

Participation Reports



How good is your metadata?

Find a member

Learn more

Richer metadata makes content useful.
Make sure your work can be found.

<https://www.crossref.org/members/prep/>

A decorative graphic on the left side of the page, consisting of a complex network of light blue lines and circular nodes, resembling a circuit board or a data network. The lines are of varying lengths and directions, creating a sense of connectivity and flow.

**Staying
connected**

Resources and support

Technical documentation: <https://www.crossref.org/documentation/>

Email us: support@crossref.org and member@crossref.org

OJS/Crossref Manual <https://docs.pkp.sfu.ca/crossref-ojs-manual/en/>

Have questions? Try our community forum: <https://community.crossref.org/>



A decorative graphic on the left side of the slide, consisting of a complex network of light blue lines and circular nodes, resembling a circuit board or a data network. The lines and nodes are arranged in a way that suggests movement and connectivity, with some lines ending in small circles.

Thank You